

Operator's Manual SUPPLEMENT

MANCO MODEL NO.
810-00

WARNING:
Read Engine
Owner's Manual,
Vehicle Operator's
Manual, and
Supplement
Carefully Before
Operating
Vehicle.

Parts List

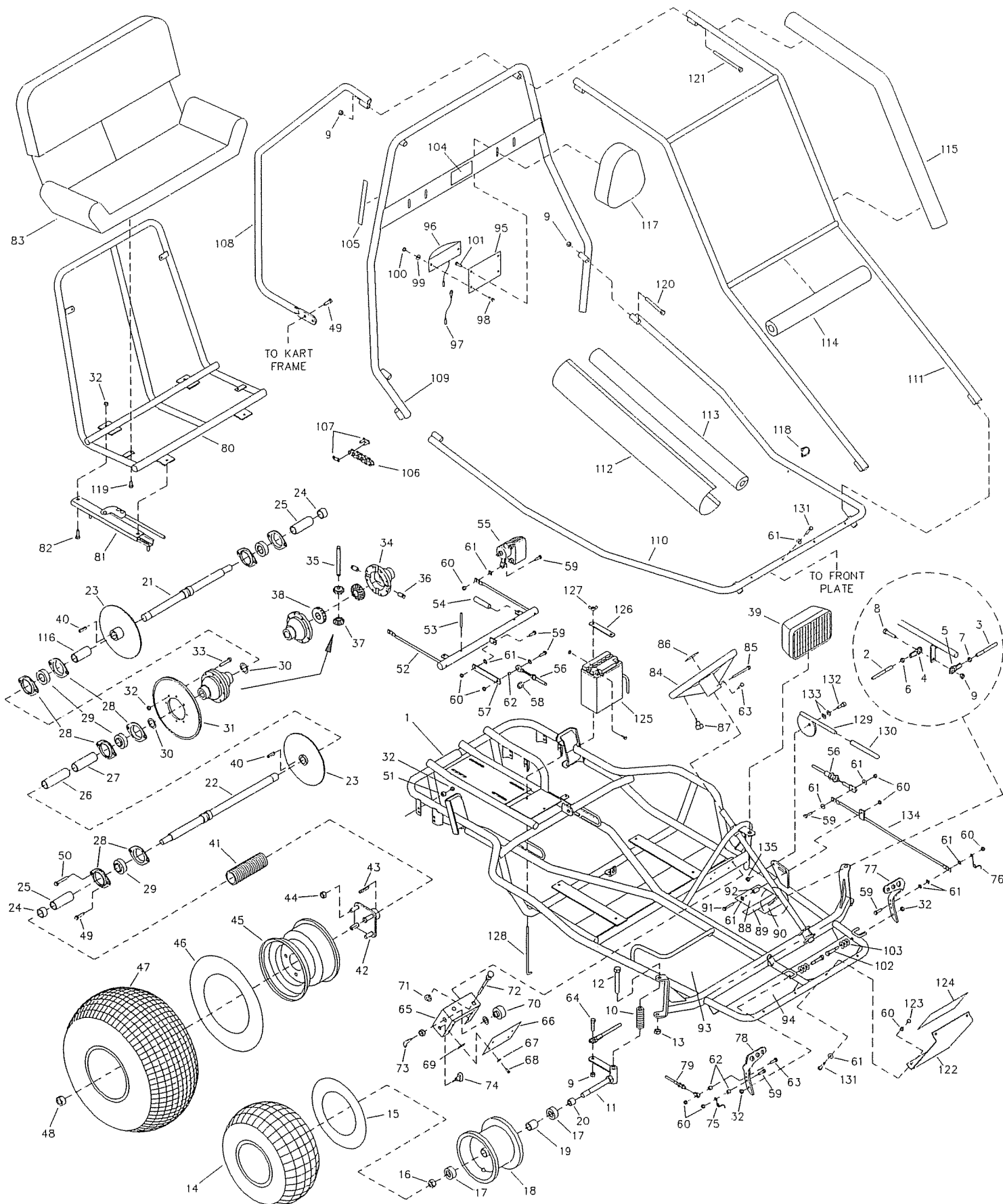


MANCO
PRODUCTS, INC.

4404 Engle Ridge Drive Ft. Wayne, Indiana 46804 219-432-1596

**THIS VEHICLE IS FOR
OFF-ROAD USE ONLY**

BEFORE OPERATING THIS VEHICLE, THE OWNER AND/OR OPERATOR MUST UNDERSTAND THE VEHICLE WAS NOT DESIGNED OR MANUFACTURED TO MEET SPECIFICATIONS FOR USE ON PUBLIC ROADS, STREETS, HIGHWAYS, OR THOROUGHFARES AND HAVE READ AND HAVE AN UNDERSTANDING OF ALL THE INSTRUCTIONS FOR SAFE ASSEMBLY AND OPERATION AS WELL AS THE INSTRUCTIONS GOVERNING THE ENGINE AND OTHER PORTIONS OF THE VEHICLE.



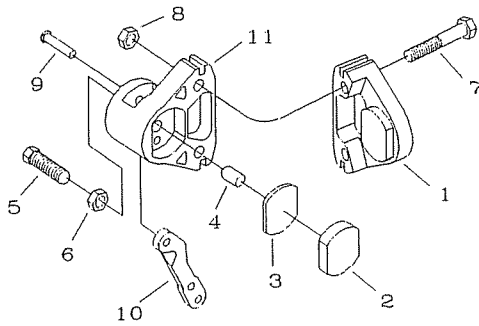
REPAIR PARTS - 810-00

| REF. NO. | PART NO. | DESCRIPTION | REF. NO. | PART NO. | DESCRIPTION |
|----------|----------|--|----------|----------|--|
| 1 | 8325-2 | Frame | 69 | 5135 | Nut, #10 Tinnerman |
| 2 | 8341 | Tie Rod, 23 inch | 70 | 6344 | Start Switch w/Key |
| 3 | 3224 | Tie Rod, 8-3/4 inch | 71 | 1469 | Washer, Choke Cable |
| 4 | 1414 | Rod End - RH | 72 | 6313 | Choke Cable |
| 5 | 1415 | Rod End - LH | 73 | 2290 | Ignition Key |
| 6 | 9092 | Nut, 3/8-24 RH Jam | 74 | 6391 | Light Switch Assembly |
| 7 | 9094 | Nut, 3/8-24 LH Jam | 75 | 9503 | Spring, Right Wound |
| 8 | 9145 | Bolt, 3/8-16 x 1-3/4" | 76 | 9502 | Spring, Left Wound |
| 9 | 9085 | Nut, 3/8-16 Toplock | 77 | 1436 | Brake Pedal |
| 10 | 8448 | Compression Spring | 78 | 6309 | Throttle Pedal, Trimmed |
| 11 | 2457 | Spindle, Right | 79 | 9345 | Throttle Cable |
| NI | 2458 | Spindle, Left | 80 | 8326-2 | Seat Frame Weldment |
| 12 | 8453 | Bolt, 1/2-13 x 6-1/2" | 81 | 6722 | Seat Slide Pair |
| 13 | 1012 | Nut, 1/2-13 Toplock | 82 | 2264 | Bolt, 5/16-18 x 3/4" |
| 14 | 4915 | Tire, 145/70 x 6 Knobby | 83 | 8437 | Seat Back/Bottom |
| 15 | 3802 | Inner Tube, 6" | 84 | 6038 | Steering Wheel |
| 16 | 1046 | Nut, 5/8-11 Toplock | 85 | 9080 | Bolt, 1/4-20 x 2-3/4" |
| 17 | 5090 | Bearing, 5/8 ID | 86 | 1689 | Decal, Steering Wheel |
| 18 | 9309FP | Wheel Assembly, Front (incl. 14-19) | 87 | 6394 | Stop Switch Assembly |
| 19 | 5950 | Spanner, 5/8 ID x 2-1/8" | 88 | 4504 | Decal, Yellow Warning |
| 20 | 5157 | Spacer, 5/8 ID x 3/4" | 89 | 8153 | Decal, Age Restriction |
| 21 | 8327 | Axle Weldment - Short | 90 | 8399 | Decal, Seat Belt Warning |
| 22 | 8328 | Axle Weldment - Long | 91 | 1848 | Bolt, 1/4-20 x 1-1/4" |
| 23 | 6314 | Brake Rotor | 92 | 9869 | Spacer, 1/4 ID x 5/16 OD x 5/8" |
| 24 | 4914 | Spacer, 1" ID x 9/16" | 93 | 8416 | Decal, Floor Pan |
| 25 | 8462 | Spacer, 1" ID x 2-3/4" | 94 | 1441 | Decal, Front Floor Pan |
| 26 | 4662 | Spacer, 1" ID x 4-1/4" | 95 | 6305-2 | Tail Light Bracket |
| 27 | 4659 | Spacer, 1" ID x 3-3/4" | 96 | 6508 | Tail Light Assembly |
| 28 | 6617 | Bearing Flange | 97 | 6319 | Tail Light Ground Wire |
| 29 | 3941 | Bearing, 1" ID | 98 | 9106 | Bolt, #10-32 x 1/2" |
| 30 | PX2970 | #9 Machinery Bushing | 99 | 6039 | Washer, #10 Internal Lock |
| ASM | 8344 | Differential/Sprocket Asm. (incl. 31-38) | 100 | 6193 | Nut, #10-32 Acorn |
| 31 | 6819 | Sprocket - 54 Tooth | 101 | 5839 | Bolt, 1/4-20 x 3/4" Flanged Whiz |
| 32 | 1189 | Nut, 5/16-18 Toplock | 102 | 1447 | Pedal Bolt |
| 33 | 9186 | Bolt, 5/16-18 x 1-1/2 GR5 | 103 | 9091 | Washer, 3/8 Flat |
| 34 | | Housing w/ Bearing | 104 | 8138 | Decal, Warning: Long Hair |
| 35 | | Pinion Shaft | 105 | 6540 | Decal, Warning: Wear Helmet |
| 36 | | Pinion Shaft Plug | 106 | 9343 | Chain, 420 x 71 Links plus Master Link |
| 37 | | Pinion Gear | 107 | 2037 | Master Link, 420 Chain |
| 38 | | Bevel Gear | 108 | 9527-2 | Rear Bar |
| 39 | 6364 | Headlight Assembly | 109 | 8321-2 | Center Bar |
| 40 | 1775 | Key, 1/4 sq. x 1-1/4" | 110 | 8322-2 | Front Bar |
| 41 | K810-00 | Axle Guard Kit | 111 | 8320-2 | Overhead Bar |
| 42 | 1557 | Wheel Hub w/Studs | 112 | 8420 | Arm Pad Cover |
| 43 | 6123 | Key, 1/4 sq. x 1-3/4" | 113 | 9759B | Foam, 30" Black |
| 44 | 1428 | Nut, 1/2-13 Cone Wheel | 114 | 9762B | Foam, 20" Black |
| ASM | 1412 | Wheel Asm, Rear (incl. 45-47) | 115 | 9758B | Foam, 43" Black |
| 45 | 1451 | Wheel Rim, 8" | 116 | 8463 | Spacer, 1" ID x 2.625" |
| 46 | 1430 | Inner Tube, 8" (Repair Part Only) | 117 | 6320 | Headrest |
| 47 | 1452 | Tire, 22 x 11 - 8 Tubeless | 118 | 9777 | Plastic Hose Clamp, 7/8" ID |
| 48 | 9162 | Nut, 3/4-10 Toplock | 119 | 1876 | Bolt, 1/4-20 x 5/8" Flanged Whiz |
| 49 | 9176 | Bolt, 5/16-18 x 1" | 120 | 2386 | Bolt, 3/8-16 x 3-1/2" |
| 50 | 6573 | Bolt, 5/16-18 x 1-3/4" | 121 | 6452 | Bolt, 3/8-16 x 5" |
| 51 | 9674 | Spacer, 3/8 ID x 3/8" | 122 | 6395-2 | Front Plate |
| 52 | 8331-2 | Brake Link Weldment | 123 | 6193 | Nut, #10-32 Acorn |
| 53 | 9455 | Spring Pin | 124 | 8419 | Decal, Front Plate |
| 54 | 9780 | Extension Spring | 125 | 3633 | Battery |
| 55 | 8197 | Brake Caliper, Left | 126 | 9642-2 | Battery Clamp Bar |
| NI | 8444 | Brake Caliper, Right | 127 | 9468 | Nut, #10-32 Nylock Wing |
| 56 | 6747 | Brake Cable | 128 | 9430 | Battery Hold Down Rod |
| 57 | 8343-2 | Cable Extension | 129 | 6773-2 | Parking Brake Handle |
| 58 | 9174 | E-Ring | 130 | 6442 | Brake Handle Cover |
| 59 | 1847 | Bolt, 1/4-20 x 1" | 131 | 1849 | Bolt, 1/4-20 x 1-1/2" |
| 60 | 9057 | Nut, 1/4-20 Toplock | 132 | 9172 | Bolt, 3/8 x 1/4 Shoulder |
| 61 | 1854 | Washer, No. 14 Flat | 133 | 6441 | Washer, 3/8 ID Spring |
| 62 | 1389 | Bushing, 1/4" ID x 5/16 | 134 | 8330-2 | Brake Rod |
| 63 | 9160 | Bolt, 1/4-20 x 7/8" | 135 | 6440 | Nut, 5/16-18 Jam |
| 64 | 9146 | Bolt, 3/8-16 x 1-1/2" | NI | 9247R4 | Assembly Instructions |
| 65 | 6296-2 | Control Box | NI | 6477 | Dingo Operator's Manual |
| 66 | 9528-2 | Cover Plate | NI | 8220 | Tecumseh Engine Manual |
| 67 | 6039 | Washer, #10 Internal Lock | | | |
| 68 | 6046 | Bolt, #10-24 x 1/2" | | | |

ASM = Assembly

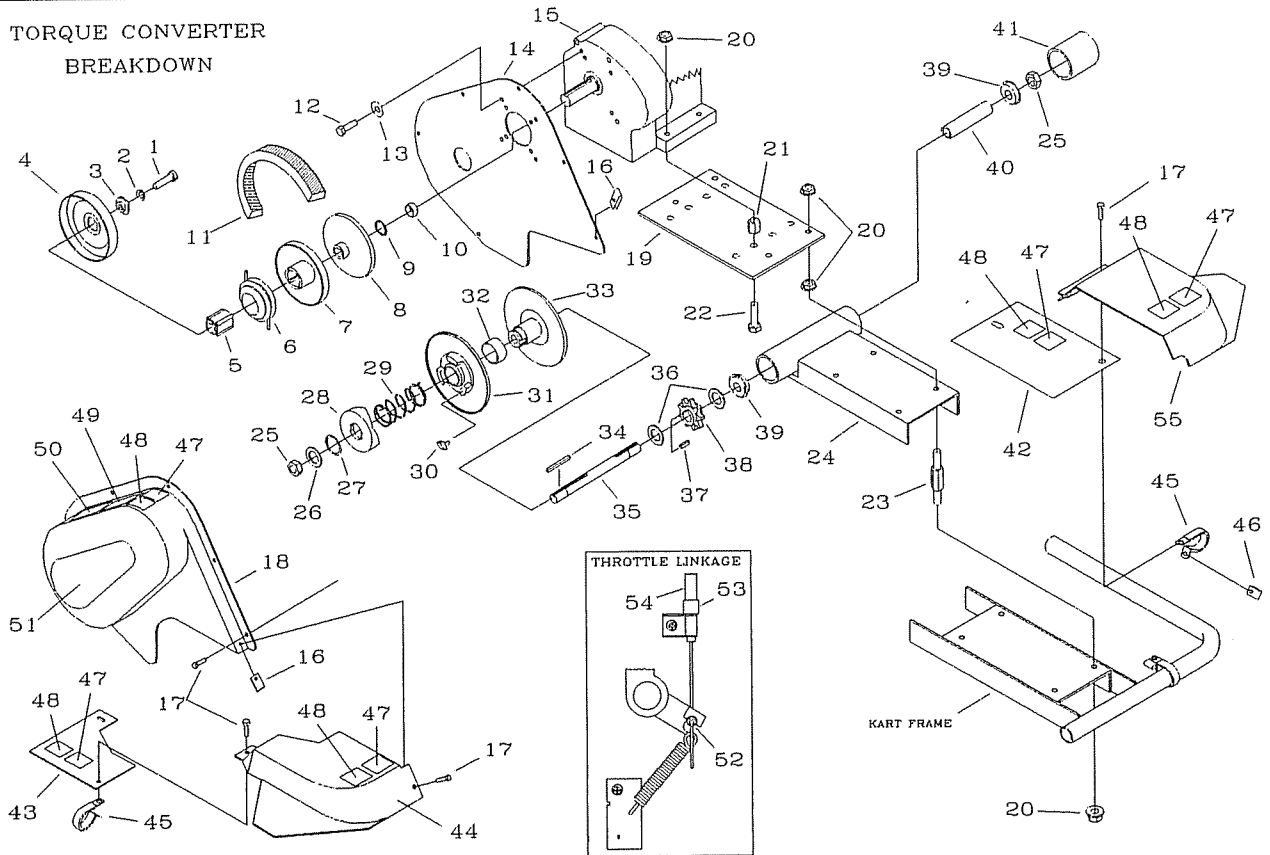
NI = Not Illustrated

CALIPER BREAKDOWN



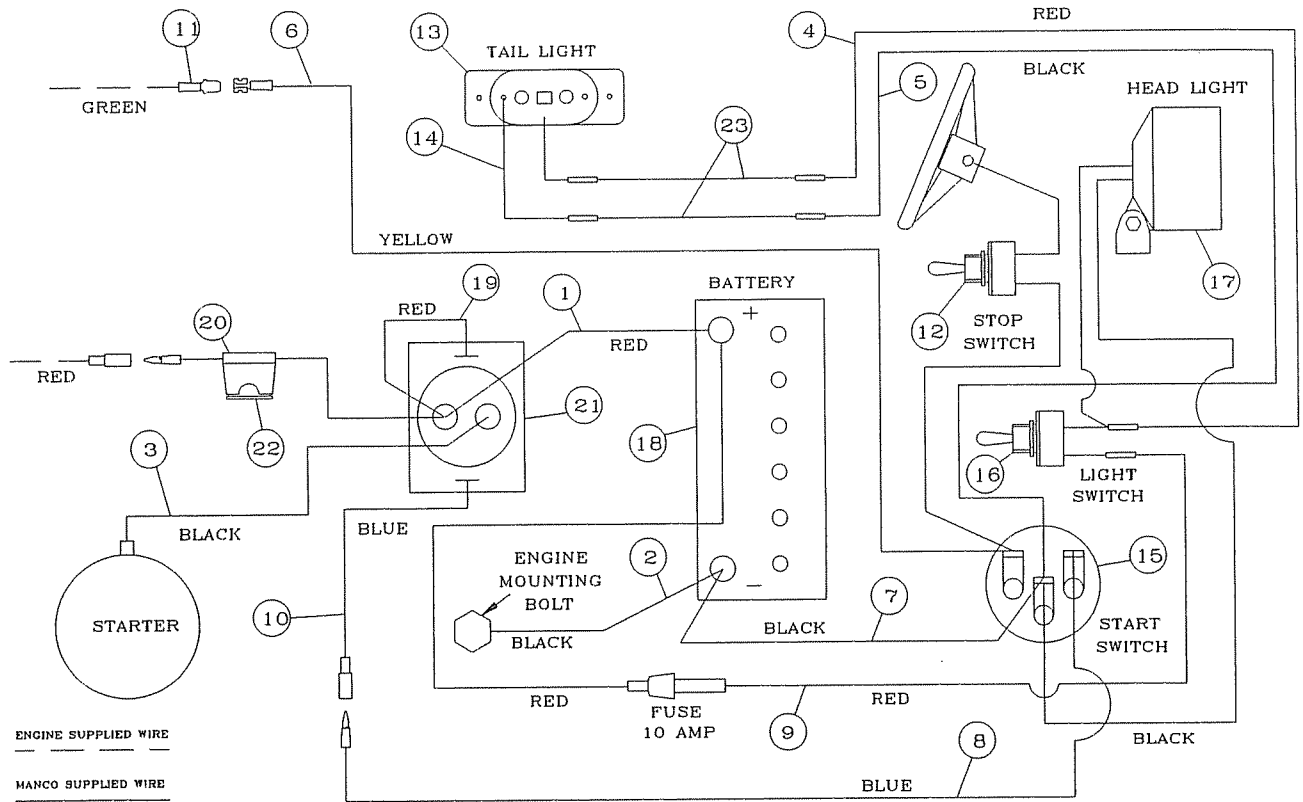
| NO | NO | DESCRIPTION |
|-----|------|-------------------------------|
| ASM | 8197 | Brake Caliper (incl. 1-11) |
| ASM | 9810 | Brake Pad Svc Kit (incl. 1-3) |
| 1 | * | Anvil w/Lining |
| 2 | * | Brake Lining |
| 3 | 3928 | Backing Plate |
| 4 | 3930 | Actuator Pin |
| 5 | 3931 | Adjuster Pin |
| 6 | 3932 | Nut, Jam |
| 7 | 9158 | Bolt, 3/8-16 x 2-1/4" |
| 8 | 9085 | Nut, 3/8-16 Toplock |
| ASM | 6534 | MB-1 Service Kit (incl. 9-11) |
| 9 | * | Groove Pin |
| 10 | * | Lever |
| 11 | * | Brake Housing |

TORQUE CONVERTER
BREAKDOWN



| REF. NO | PART NO | DESCRIPTION | REF. NO | PART NO | DESCRIPTION | REF. NO | PART NO | DESCRIPTION |
|---------|---------|---|---------|---------|---|--------------------------------------|---------|------------------------------|
| 1 | 8203 | Bolt, 3/8-24 x 1-3/4" | 21 | 8206 | Nut, 1/2-20 High | 41 | 8194 | Cap, Plastic |
| 2 | 1130 | Washer, 3/8 Split Lock | 22 | 9127 | Bolt, 5/16-18 X 2-1/4" | 42 | 8443 | Right Deck Cover |
| 3 | 2468 | Washer, Pilot | 23 | 8205 | Stud | 43 | 8442 | Left Deck Cover |
| ASM | 8190 | Driver Pulley Assembly (incl. REF. 4-8) | 24 | 8209-2 | Chassis | 44 | 8440 | Caliper Cover - Left |
| 4 | * | Drum | 25 | 9155 | Nut, 5/8-11 Jam | 45 | 8266 | Loop Clip |
| 5 | * | Hub | 26 | 8193 | Washer, Cup | 46 | 8227 | Clip Nut |
| 6 | * | Shoe Assembly | ASM | 8191 | Driven Pulley Assembly (incl. REF. 27-33) | 47 | 1049 | Decal, Caution |
| 7 | * | Moveable Sheave | 27 | 2477 | Retaining Ring | 48 | 4912 | Decal, Warning: Guard |
| 8 | * | Stationary Sheave | 28 | * | Cam | 49 | 8138 | Decal, Warning: Entanglement |
| 9 | 3887 | Spacer, 1" ID x 1/16 | 29 | 6805 | Spring | 50 | 6958 | Decal, Tire Pressure |
| 10 | 4914 | Spacer, 1" ID x 9/16 | 30 | 6804 | Button, Nylon | 51 | 8225 | Decal, TAV Cover |
| 11 | 8192 | Belt, Asymmetrical | 31 | * | Moveable Sheave | NI | 9677 | Decal, Warning: Hot Surfaces |
| 12 | 9101 | Bolt, 5/16-24 x 1/2" | 32 | * | Bushing | NI | 9678 | Decal, Warning: Eng. Exhaust |
| 13 | 9060 | Washer, 5/16 Plain | 33 | * | Stationary Sheave | NI | 5964 | Decal, Oil Warning |
| 14 | 8200 | Cover Panel | 34 | 3403 | Key, 3/16sq x 2" | Throttle Linkage Illustration | | |
| 15 | 8189 | Engine, 10hp Tecumseh | 35 | 8219 | Jackshaft | 52 | 1018 | Cable Stop and Swivel Screw |
| 16 | 2449 | Nut, Tinnerman | 36 | 1119 | Spacer, 5/8ID x 1/8" | 53 | 1628 | Cable Retainer |
| 17 | 9006 | Bolt, 1/4-20 x 1/2" Whiz Flange | 37 | 1031 | Key, 3/16sq x 1/2" | 54 | 9345 | Throttle Cable |
| 18 | 8199 | Cover | 38 | 1125S | Sprocket, 9T #420 | 55 | 8441 | Caliper Cover - Right |
| 19 | 8214-2 | Adapter Plate | 39 | 5090 | Bearing | * = Not Available Separately | | |
| 20 | 1263 | Nut, 5/16-18 Flange | 40 | 2430 | Spanner | ASM = Assembly NI = Not Illustrated | | |

WIRING DIAGRAM



| REF NO. | PART NO. | DESCRIPTION | REF NO. | PART NO. | DESCRIPTION |
|------------|--------------|------------------------------------|---------|----------|-------------------------------|
| 1 | 3611 | Battery Cable, Red 9 in. | 13 | 6508 | Tail Light Assembly |
| 2 | 3610 | Battery Cable, Black 9 in. | 14 | 6319 | Wire, Taillight Ground |
| 3 | 6516 | Battery Cable, Black 9 in. | 15 | 6344 | Start Switch |
| ASM | 9376P | Wiring Harness (incl. 4-9) | 16 | 6391 | Light Switch Assembly |
| 4 | 9379 | Wire, Taillight/Light Switch (Red) | 17 | 6364 | Headlight Assembly |
| 5 | 9381 | Wire, Taillight/Switch (Black) | NI | 2964 | Headlight Bulb |
| 6 | 9383 | Wire, Engine/Switch (Yellow) | 18 | 3633 | Battery |
| 7 | 6386 | Wire, Batt Gnd/Switch (Black) | 19 | 2093 | Solenoid Jumper Wire Assembly |
| 8 | 9385 | Wire, Solenoid/Switch (Blue) | 20 | 8216 | Fuse Assembly, 15 Amp |
| 9 | 9377 | Wire, Solenoid/Light Switch (Red) | 21 | 2084 | Solenoid |
| 10 | 8281 | Start Wire Adapter | 22 | 8202 | Fuse, 15 Amp |
| 11 | 8108 | 1/4" Male Tab Terminal | 23 | 8504 | Extension Wire Assembly |
| NI | 6505 | Poly Loom 43" | NI | 9389 | Fuse, 10 Amp |
| NI | 6897 | Poly Loom 28" | NI | PX2304 | Screw, 1/4 x 5/8 Self Tapping |
| NI | 6763 | Poly Loom "Tee" | | | |
| NI | 6813 | Poly Loom "Outlet" | | | |
| 12 | 6394 | Stop Switch Assembly | | | |

NI = Not Illustrated
 ASM = Assembly