

OPERATOR'S MANUAL
SUPPLEMENT
Model No. 720L

⚠ WARNING:

Read Engine
Owner's Manual,
Vehicle Operator's
Manual, and
Supplement
Carefully Before
Operating Vehicle.

Parts List



4404 Engle Ridge Drive, Fort Wayne, IN 46804
ph (260) 432-1596 fx (260) 432-7870

**THIS VEHICLE IS FOR
OFF-ROAD USE ONLY**

BEFORE OPERATING THIS VEHICLE, THE OWNER AND/OR OPERATOR MUST UNDERSTAND THE VEHICLE WAS NOT DESIGNED OR MANUFACTURED TO MEET SPECIFICATIONS FOR USE ON STREETS, HIGHWAYS, OR THOROUGHFARES AND HAVE READ AND HAVE AN UNDERSTANDING OF ALL THE INSTRUCTIONS FOR SAFE ASSEMBLY AND OPERATION AS WELL AS THE INSTRUCTIONS GOVERNING THE ENGINE AND OTHER PORTIONS OF THE VEHICLE.

PARTS LIST MODEL 720L

| REF | PART# | DESCRIPTION |
|-----|----------|---|
| 1 | 13535-29 | FRAME - ULTRAMARINE BLUE |
| | 13635-37 | FRAME - RED WAGON |
| | 13635-44 | FRAME - MINERAL BRONZE |
| 2 | 13537 | REAR SWINGARM ASSY (INCL #15) |
| 3 | 11954-2Z | RIGHT FRONT SWINGARM W/ZERK |
| | 11955-2Z | LEFT FRONT SWINGARM W/ZERK |
| | 11923-37 | REAR BAR - RED WAGON |
| | 11923-40 | REAR BAR - SPARKLE SILVER |
| | 11923-44 | REAR BAR - MINERAL BRONZE |
| 4 | 11925-37 | OVERHEAD BAR - RED WAGON |
| | 11925-40 | OVERHEAD BAR - SPARKLE SILVER |
| | 11925-44 | OVERHEAD BAR - MINERAL BRONZE |
| 5 | 13603-2 | SEAT FRAME - BLACK |
| 6 | 9022 | WASHER 1/2 STD FLAT ZINC |
| 7 | 9188 | BOLT 1/2-13 X 1.50 HHCS G5 ZINC |
| 8 | 13503 | NUT 1/2-13 CENTERLOCK HEX ZINC |
| 9 | 1264 | BOLT 1/2-13 X 3.75 HHCS G2 ZINC |
| 10 | 10834 | BOLT 1/2-13 X 7.00 HHCS G5 ZINC |
| 11 | 1104 | SPACER SPLIT .8120D .625ID 1.00L |
| 12 | 13354 | NUT 5/8-11 CL HEX ZINC |
| 13 | 12140 | BRONZE BUSHING .625 X 1.25 |
| 14 | 12141 | SHOULDER BOLT 1/2 X 1.875 |
| 15 | 13191 | FRONT WHEEL ASSEMBLY (INCLUDES 20) |
| 16 | 5090 | BEARING 5/8 ID 1-3/8 OD SNAP RING |
| 17 | 13504 | BOLT 1/2-13 X 1.00 HHCS G5 ZINC |
| 18 | 13486 | TIRE - 16 X 6.50-8 BADLAND |
| 19 | 9674-16 | SPACER 3/8 X 3/8 ZINC |
| 20 | 11950-2Z | RIGHT SPINDLE W/ZERK - BLACK |
| 21 | 11951-2Z | LEFT SPINDLE W/ZERK - BLACK |
| 22 | 12467 | TIE ROD ASSEMBLY LONG (INCL. 25.26,28-30) |
| 23 | 4355 | TIE ROD ASSEMBLY SHORT (INCL. 25-27,29,30) |
| 24 | 1414 | RIGHT THREAD ROD END |
| 25 | 9092 | RIGHT JAM NUT 3/8-24 |
| 26 | 4352 | TIE ROD 9.50 INCH |
| 27 | 12466 | TIE ROD 16.50 INCH |
| 28 | 9024 | LEFT JAM NUT 3/8-24 |
| 29 | 1415 | LEFT THREAD ROD END |
| 30 | 9158 | BOLT 3/8-16 X 2.25 HHCS G5 ZINC |

| REF | PART# | DESCRIPTION |
|-----|---------|--|
| 32 | 9146 | BOLT 3/8-16 X 1.50 HHCS G5 ZINC |
| 33 | 6293-16 | BRAKE PEDAL |
| 34 | 6309-16 | THROTTLE PEDAL |
| 35 | 1189 | NUT 5/16-18 HEX TL ZINC |
| 36 | 8655 | SEAT SLIDE - PAIR |
| 37 | 9176 | BOLT 5/16-18 X 1.00 HHCS G5 ZINC |
| 38 | 1447 | SHOULDER BOLT 5/16-18 X 11/16THD |
| 39 | 9091 | WASHER FLAT 3/8 SAE N ZINC |
| 40 | 1848 | BOLT 1/2-20 X 1.25 HHCS G5 ZINC |
| 41 | 1849 | BOLT 1/2-20 X 1.50 HHCS G5 ZINC |
| 42 | 1846 | BOLT 1/2-20 X .750 HHCS G5 ZINC |
| 43 | 1847 | BOLT 1/2-20 X 1.00 HHCS G5 ZINC |
| 44 | 1389 | BUSHING .25ID X .031G X .313 |
| 45 | 9502 | PEDAL SPRING - LEFT WOUND |
| 46 | 9503 | PEDAL SPRING - RIGHT WOUND |
| 47 | 1854 | WASHER NBR 14 FLAT MS ZINC |
| 48 | 8251 | THROTTLE CABLE (INCLUDES #50) |
| 49 | 9058 | NUT 5/16-24 HEX JAM |
| 50 | 2388 | NUT 3/8-24 |
| 51 | C1001 | HYDRAULIC BRAKE & MASTER CYLINDER ASSEMBLY |
| 52 | 12496 | STEERING WHEEL |
| 53 | 12481 | STEERING WHEEL CAP |
| 54 | 9103 | BOLT 1/2-20 X 2.00 HHCS G2 ZINC |
| 55 | 9057 | NUT 1/2-20 TL ZINC |
| 56 | 3818 | CHAIN 420 X 80P (INCL #60) |
| 57 | 2037 | MASTER LINK 420 |
| 58 | 13190 | REAR WHEEL ASSEMBLY (INCLUDES 62 & 65) |
| 59 | 13488 | TIRE - 22 X 11-8 BADLAND |
| 60 | G0725 | LOOM 7.25L X 1.625OD |
| 61 | 13302 | WHEEL FLANGE ASSY - HEX |
| 62 | 1428 | NUT 1/2-20 CONE WHEEL |
| 63 | 8227 | NUT 1/2-20 CLIP |
| 64 | 11387 | LOOP CLIP 1.25ID |
| 65 | 1876 | BOLT 1/2-20 X .625 HH WF ZINC |
| 66 | 2449 | TINNERMAN NUT |
| 67 | 13588 | TOP COVER |

| REF | PART# | DESCRIPTION |
|-----|---------|----------------------------------|
| 73 | 13601 | BOTTOM COVER |
| 74 | 13336 | TAV COVER ASSEMBLY |
| 75 | 9929 | BLACK VINYL CAP |
| 76 | 8778 | LAP/SHOULDER SEAT BELT |
| 77 | 12015 | SHOCK ABSORBER |
| 78 | 9190 | BOLT 3/8-16 X 3.25 HHCS G5 ZINC |
| 79 | 9085 | NUT 3/8-16 TL HEX ZINC |
| 80 | 9192 | NUT 3/8-16 HEX WF |
| 81 | 8118 | CHOKE CABLE |
| 82 | 1263 | NUT 5/16-18 HEX WF ZINC |
| 83 | 11330 | WARNING DECAL SHEET |
| 84 | 12008 | WARNING DECAL SHEET |
| 85 | 11836 | FLOOR PAN SCUFF DECAL |
| 86 | 11636 | BACK/BOTTOM SINGLE SEAT |
| 87 | 8484 | CLEVIS PIN 1/2 X 1.50 |
| 88 | 4372 | HANDHOLD |
| 89 | 9116 | COTTER PIN 3/32 X .750 ZINC |
| 90 | 9006 | BOLT 1/2-20 X .50 HH WF |
| 91 | 13590 | WIRING HARNESS |
| 92 | 13589 | LIGHT & STOP SWITCH W/WIRING |
| 93 | 13097 | REPLACEMENT - LIGHTS ONLY (PAIR) |
| 94 | 13096 | REPLACEMENT - 35WATT BULB |
| 95 | 9389 | 10 AMP FUSE (USED IN RUN LIGHTS) |
| 96 | 12761 | VOLTAGE REGULATOR |
| 97 | 13303 | BRAKE HUB |
| 98 | 9099 | BOLT 3/8-16 X 1 |
| 99 | 13331 | M8 BOLT |
| 100 | 13309-2 | BRAKE LINK - BLACK |
| 101 | 6442 | BRAKE HANDLE COVER |
| 102 | 9869 | SPACER .25ID .3120D .625 BR |
| 103 | 12018 | RIGHT SIDE PANEL |
| 104 | 12019 | LEFT SIDE PANEL |
| 105 | 9145 | BOLT 3/8-16 X 1.75 HHCS G5 ZINC |
| 106 | 9125 | WASHER FLAT 3/8 USS W ZINC |
| 107 | 12039 | FOAM 4.50 INCH BLACK |
| 108 | 1019 | CABLE TIE |
| 109 | 12252 | ENGINE - 10HP |

PARTS LIST MODEL 720L

| REF | PART# | DESCRIPTION |
|------------|---------|--|
| ASM | 2594 | DRIVER PULLEY (INCLUDES 106 - 114) |
| 106 | ** | COVER AND DRIVE PLATE |
| 107 | 2472 | EXTENSION SPRING |
| 108 | 2470 | CAM ROLLER |
| 109 | 2471 | SPRING CLIP |
| 110 | ** | MOVEABLE FACE AND HUB |
| 111 | 2474 | GUIDE BUSHING |
| 112 | 2475 | COMPRESSION SPRING |
| 113 | ** | RETAINING RING |
| 114 | ** | FIXED FACE AND POST |
| ASM | 8664 | DRIVEN PULLEY (INCLUDES 115, 117-123) |
| 115 | ** | FIXED FACE AND POST |
| 117 | 2483 | SPACER |
| 118 | ** | MOVEABLE FACE AND CAM |
| 119 | 2516 | BUTTON INSERT |
| 120 | 2480 | TORSION SPRING |
| 121 | ** | FIXED CAM |
| 122 | 2478 | THRUST WASHER |
| 123 | 2477 | RETAINING RING |
| 124 | 1466 | NUT 5/8-11 FLEXLOCK JAM |
| 125 | 9101 | BOLT 5/16-24 X .50 HHCS G5 NL ZINC |
| 126 | 12350 | BOLT STUD 7/16-20 X 4.25 G5 ZINC |
| 127 | 2467 | WASHER 7/16 SL |
| 128 | 2468 | PILOT WASHER |
| 129 | 8720 | SPROCKET 420P 9T INTEGRAL KEY |
| 130 | 3403 | KEY 3/16 SQ X 2.000 |
| 131 | 1119 | SPACER .625ID 1.062OD .125 THK |
| 132 | 1082 | SPACER 1.00ID 14G 438L ZINC SPLIT |
| 133 | 11808 | BLACK VINYL CAP |
| 134 | 13079-2 | COVER PLATE - BLACK |
| 136 | 3887 | SPACER - 1.01D X 1/16 |
| 137 | 12346 | DRIVE BELT |
| 138 | 13078-2 | TAV CHASSIS WDMT - BLACK |
| 139 | 2430 | SPANNER 5/8 ID X 7-1/8 - 14 GA |
| 140 | 8854 | JACKSHAFT - 13.688 |
| 141 | 12349 | ENGINE SUPPORT SPACER ASSEMBLY |

| REF | PART# | DESCRIPTION |
|-----------|----------------------------------|--|
| 142 | 13298 | AXLE |
| 143 | C1010 | BRAKE ROTOR - 8.63 X .156 |
| 145 | 9060 | WASHER 5/16 TYPE A PLAIN SAE N ZINC |
| 146 | 2265-16 | SPACER 1.00ID 12G .750L ZINC |
| 147 | 13299 | BEARING PRECISION - HEX |
| 148 | 13300 | BEARING FLANGE HEAVY |
| 149 | 1194 | WASHER 3/4 SAE FLAT ZINC |
| 150 | 13355 | NUT 3/4-10 HEX CENTERLOCK ZINC |
| 151 | 9338 | SPROCKET 420P 60T |
| 152 | 13301 | HEX SPROCKET HUB |
| 153 | 6701 | BOLT 5/16-18 X 1.25 SHCS PLAIN |
| 154 | 11928-37 11928-40 11928-44 | CENTER BAR - RED WAGON CENTER BAR - SPARKLE SILVER CENTER BAR - MINERAL BRONZE |
| 155 | 6320 | HEADREST - SINGLE |
| 156 | 5447 | SAFETY FLAG - 6 FT |
| 157 | 12016-2 | HEADREST FRAME - BLACK |
| 169 | 11361 | FLAG MOUNTING BOLT |
| 170 | 6452 | BOLT 3/8-16 X 5.00 HHCS G5 ZINC |
| 171 | 2386 | BOLT 3/8-16 X 3.50 HHCS G5 ZINC |
| 172 | 13617-2 | STEERING PIVOT LEVER -BLACK |
| 173 | 13048 | IMPELLER |
| 174 | 8604 | NUT 7/16-20 HEX |
| 175 | 8402 | NUT 7/16-20 TL HEX |
| 176 | 9430 | BATTERY HOLD DOWN ROD |
| 177 | 9468 | NUT NBR 10-32 NL WING |
| 178 | 9642-2 | BATTERY CLAMP BAR - BLACK |
| 179 | 13324 | BATTERY |
| NI | 12149 | BATTERY BOOT - RED |
| NI | 12150 | BATTERY BOOT - BLACK |
| WD | 3610 | BATTERY CABLE BLACK 9IN |
| WD | 12351 | WIRING DIAGRAM |
| 180 | 6803-2 | CONTROL PANEL COVER - BLACK |
| 181 | 5135 | TINNERMAN NUT |
| 182 | 6046 | BOLT NBR 10-24 X .500 HHMS ZINC |
| 183 | 6039 | WASHER NBR 10 IL ZINC |
| 184 | 13456 | BOLT 3/8-24 X 1.00 HHCS GR5 NL |
| 186 | 12348 | RETURN SPRING |

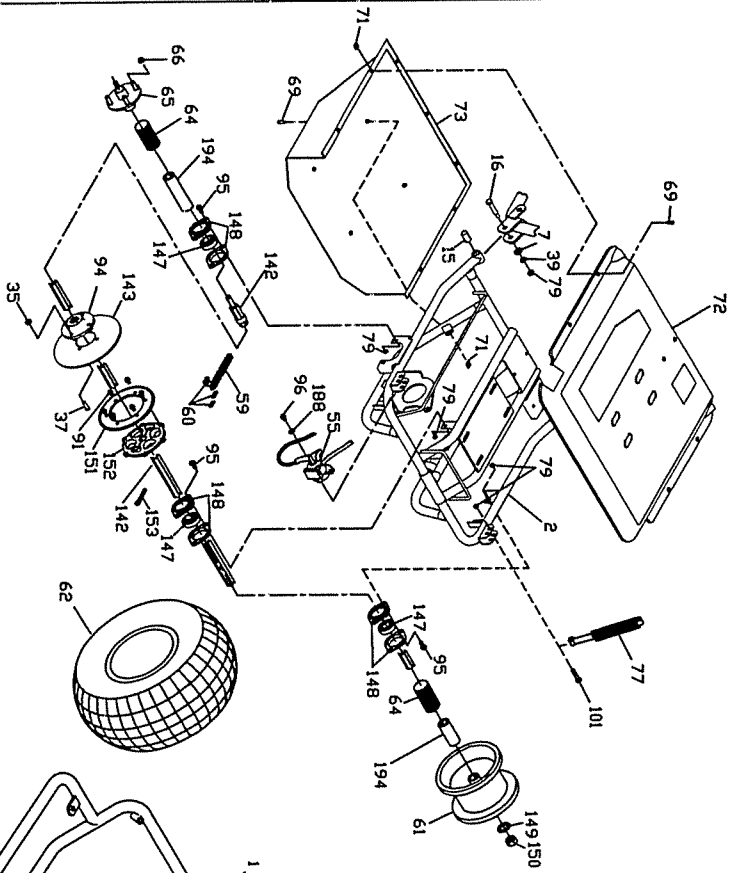
| REF | PART# | DESCRIPTION |
|-----|----------|-------------------------------------|
| 187 | 12347 | SWIVEL SCREW |
| 188 | 9030 | LOCKWASHER 5/16 |
| 189 | 13619-2 | BRAKE ROD LONG - BLACK |
| 190 | C1000 | RACK AND PINION |
| 191 | 1130 | WASHER 3/8 SL |
| 192 | 13454-2 | STEERING LINK BRACKET - BLACK |
| 193 | 200841 | FENDER WASHER |
| 194 | 13344-16 | SPACER - 1.25ID X 12G X 5.00 - ZINC |
| 195 | 13604 | BRAKE CABLE |

ASM = ASSEMBLY

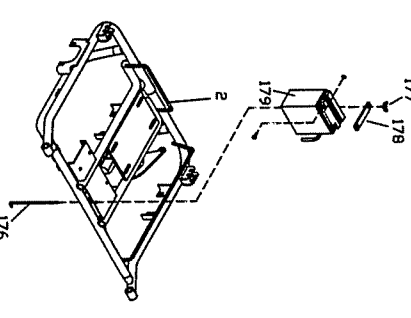
NI = NOT ILLUSTRATED

WD = WIRING DIAGRAM

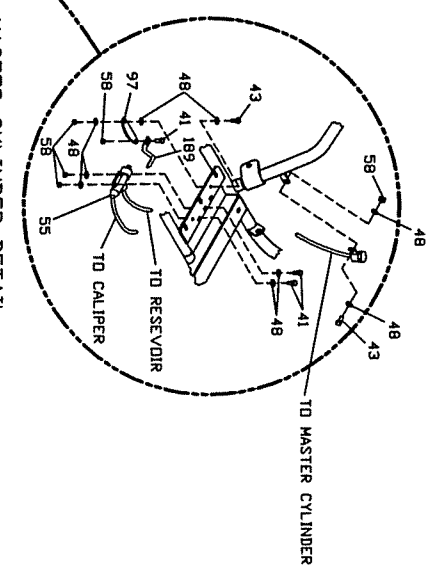
** = NOT SOLD SEPERATELY



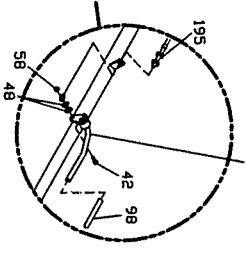
SWINGARM ASSEMBLY DETAIL



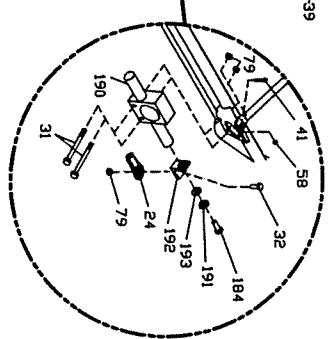
BATTERY ASSEMBLY DETAIL



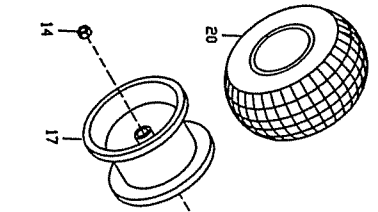
MASTER CYLINDER DETAIL



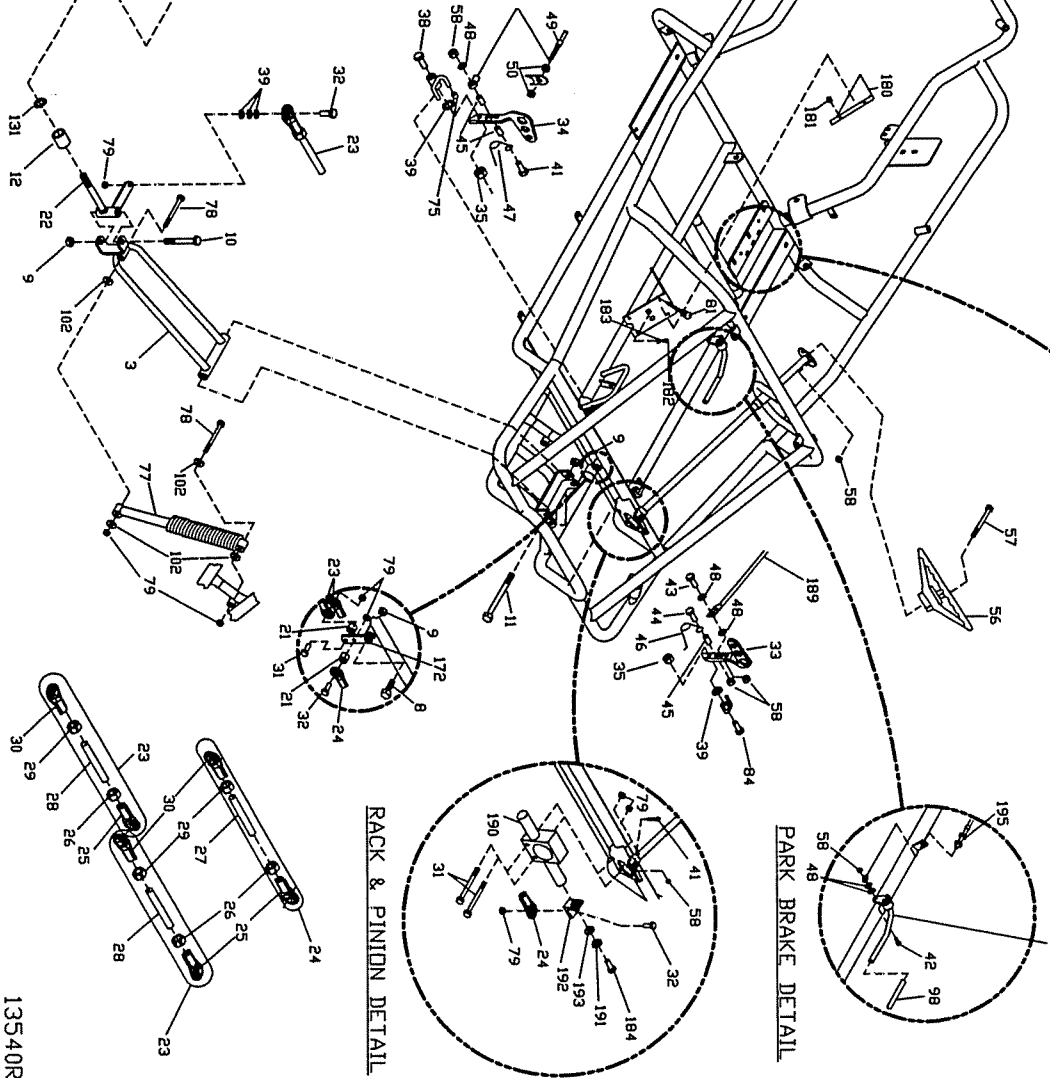
PARK BRAKE HANDLE

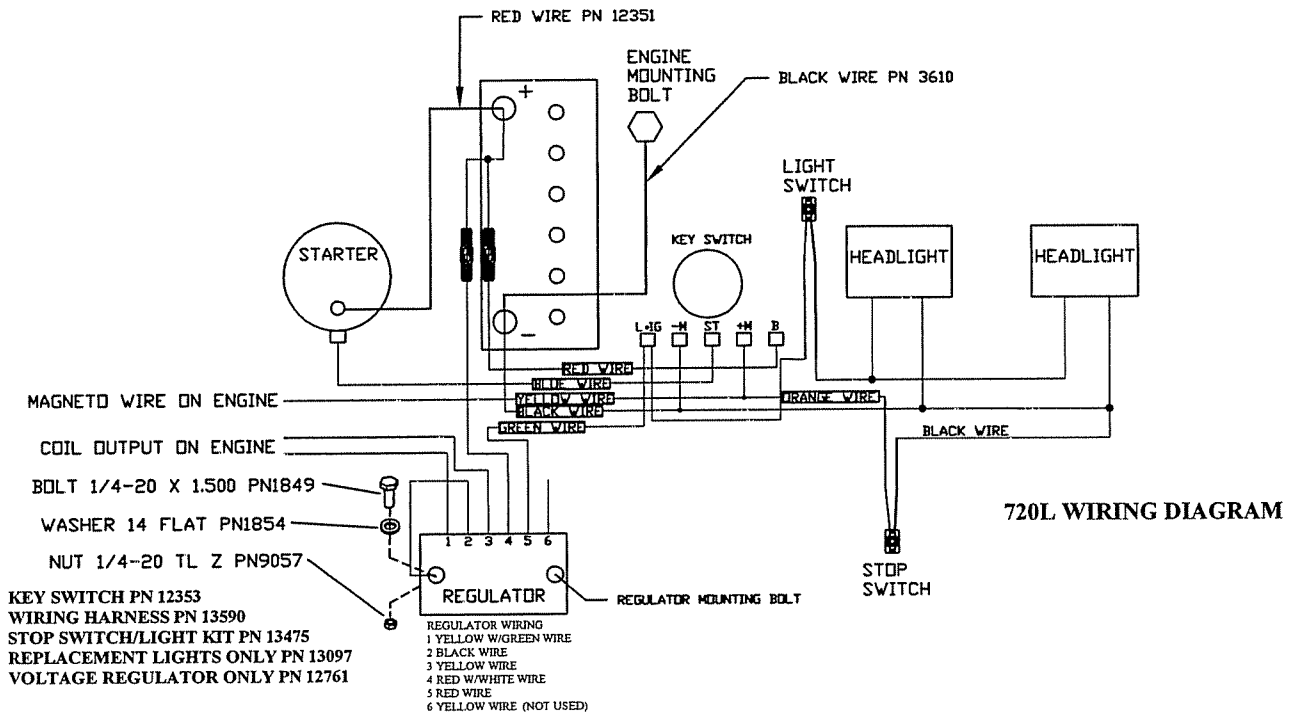


PARK BRAKE DETAIL

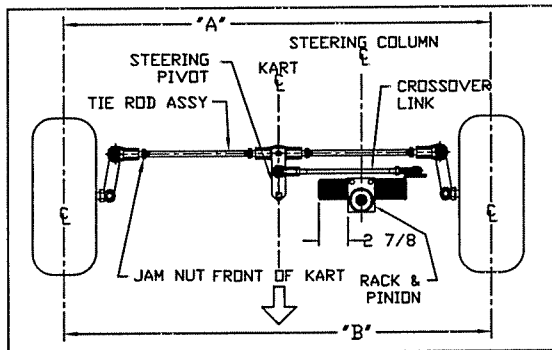


RACK & PINION DETAIL



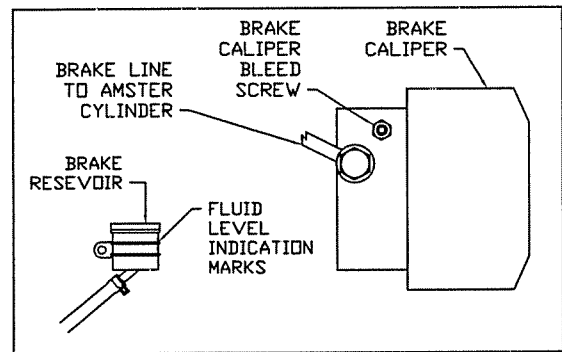


720 MAINTENANCE INSTRUCTIONS



STEERING ALIGNMENT INSTRUCTIONS

- 1) LOOSEN ALL TIE ROD NUTS
- 2) ROTATE STEERING WHEEL SUCH THAT DIMENSION FROM THE END OF THE RACK AND PINION TO THE RACK AND PINION BODY IS 2 7/8". REF ABOVE DIAGRAM
- 3) ADJUST THE CROSSOVER LINK SUCH THAT THE STEERING PIVOT RUNS PARALLEL TO THE CENTERLINE OF THE KART AS SHOWN
- 4) TIGHTEN CROSS OVER LINK JAM NUTS
- 5) ADJUST RH AND LH TIE ROD ASSEMBLIES SUCH THAT DIMENSION "A" IS 3/8"-1/2" LONGER THAN DIMENSION "B"
- 6) RETIGHTEN RH AND LH TIE ROD JAM NUTS



BRAKE BLEED/ADJUSTMENT INSTRUCTIONS

- 1) INSPECT FLUID RESEVOIR BEHIND SEAT ENSURE THAT THE FLUID LEVEL IS BETWEEN THE INDICATION MARKS
- 2) ADD DOT 3 BRAKE FLUID IF REQUIRED
- 3) UNCAP AND LOOSEN BRAKE CALIPER BLEED SCREW
- 4) HAVE A SECOND PERSON DEPRESS THE BRAKE PEDAL SLOWLY UNTIL THE PEDAL BOTTOMS OUT
- 5) HOLD THE PEDAL IN THE DEPRESSED POSITION UNTIL THE BLEED SCREW IS RETIGHTENED
- 6) PUMP THE BRAKE PEDAL TWO TO THREE TIMES AND REPEAT PROCEDURE UNTIL THE PEDAL FEELS FIRM DURING THE PEDAL STROKE
- 7) AIR BUBBLES SHOULD BE SEEN AT THE BLEED SCREW DURING THE BLEED PROCEDURE UNTIL PEDAL BECOMES FIRM
- 8) TIGHTEN AND RECAP THE BLEED SCREW