

Congratulations on the purchase of your Fun Kart! These instructions will guide you through the assembly process. Carefully read these instructions and familiarize yourself with the tools and fasteners required before starting the assembly of your vehicle.

Fasteners required for assembly

Please refer to the last page of instructions for an illustrated list of fasteners. Ensure that you have all the fasteners before starting the assembly of your vehicle. Note that some fasteners may be pre-installed into some of the overhead bars.

Tools required for assembly

Please gather the required tools and familiarize yourself with them before starting the assembly of your vehicle. The tools will be mentioned in italic text for easy recognition.

<i>Hammer</i>	<i>Box Cutter</i>	<i>Pry Bar</i>
<i>Safety Glasses</i>	<i>Socket Wrench</i>	<i>10mm Socket</i>
<i>12mm Wrench</i>	<i>Phillips Screw Driver</i>	

⚠ WARNING

Wear proper eye protection during the uncrating and assembly process to avoid potential eye injuries.

⚠ WARNING

RISK OF SERIOUS INJURY OR DEATH
The Brush Bars and the Seat and Shoulder Belt are critical parts of the Operator / Passenger safety system on this kart. Do not attempt to operate the kart until all components have been properly installed.

1 Uncrating the fun kart

- Wear your **Safety Glasses** to prevent eye injury.
- Using the **Hammer** and **Pry Bar**, remove cross supports at each end of the crate and discard.
- Carefully pry and remove crate top and discard.

2 Remove crate sides and discard

- Using **Box Cutters**, cut and remove the hold down ties.
- Remove the kart from the crate base and discard base.

3 Unpacking the components

- Unpack all of the loose components from the unit and set aside.
- Remove protective plastic from each component and discard.

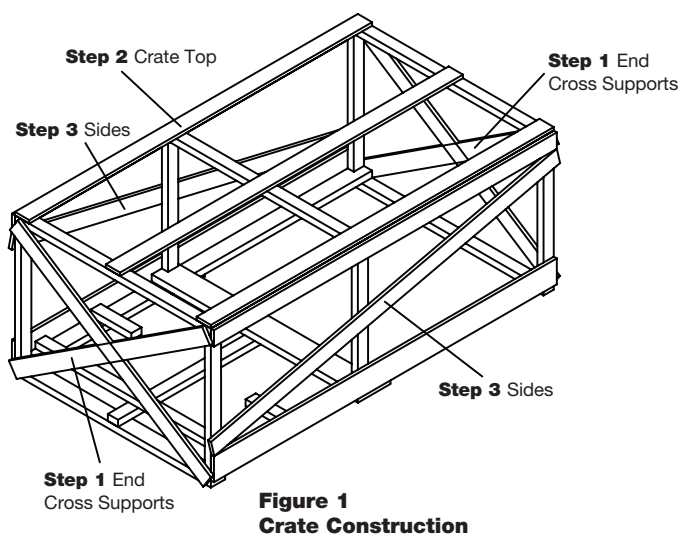


Figure 1
Crate Construction

4 Over Head Bar Installation

- Locate the C-Pillar and fasteners: (2) 14086, (4) 14087, (4) 14944 and (2) 14088. (Reference Fastener Illustration on page 2.)
- Locate the rubber connector seals (6) 14942, and rubber fastener caps (20) 14946 packaged in the customer hardware kit.
- Slip the connector seal on the ends of each overhead bar where it will connect to the main frame (ref Figs 2 and 3)
- Set the C-Pillar in place. Push the connector seals down to the joint and install the fasteners with a 12mm Wrench and 10mm Socket Wrench. **DO NOT tighten the fasteners at this time.** Ensure that seat belts are not twisted or wrapped around C-Pillar.
- Locate the A-Pillars and fasteners: (4) 14086, (6) 14087, (6) 14944, and (2) 14088. Install the connector seals as shown on the diagram below.
- Set the A-Pillars in place, slide the connector seals down, and install the fasteners with a 12mm Wrench and 10mm Socket Wrench. **DO NOT tighten the fasteners at this time.**
- Locate the Overhead Cross Bar and fasteners: (2) 14086, (2) 14087, (2) 14944.
- Place the bar as shown in the illustration below and install the fasteners using a 10mm Socket Wrench. **DO NOT tighten any fasteners at this time.**
- Locate the B-Pillars and fasteners: (4) 14086, (6) 14087, (6) 14944, and (2) 14088.
- Install the connector seals as shown. Set the B-Pillars in place and install the fasteners with a 12mm Wrench and a 10mm Socket Wrench. **DO NOT tighten any fasteners at this time.**
- Locate the rear Spoiler, spoiler supports and fasteners: (2) 14086, (2) 14087, (2) 14944, (4) 14239 and (6) 14088.
- Install the spoiler and supports using a 12mm Wrench and a 10mm Socket.
- Tighten all fasteners using the 12mm Wrench and 10mm Socket Wrench. Ensure that all connector seals are pushed down to the frame connection, and that no fasteners are cross threaded.
- Install all fastener caps.

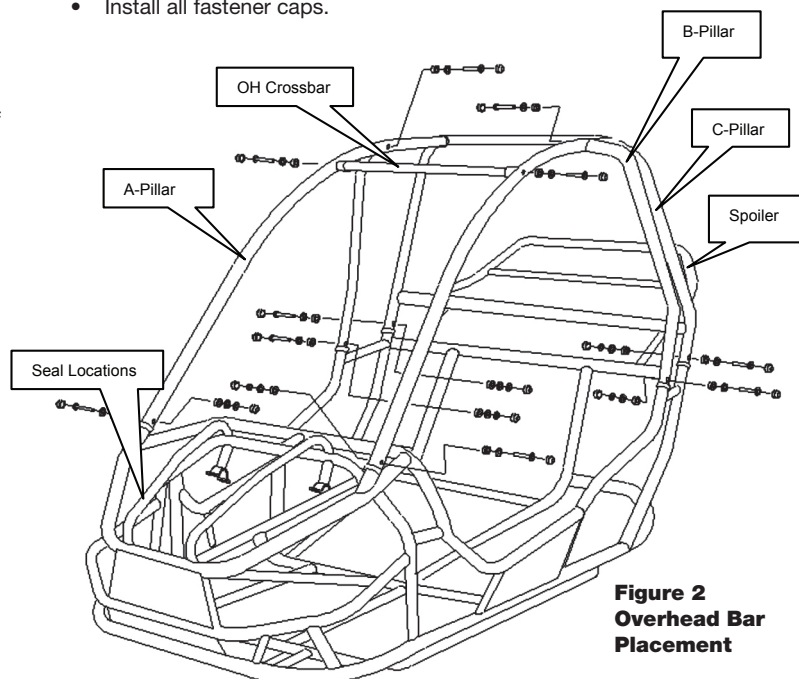


Figure 2
Overhead Bar Placement

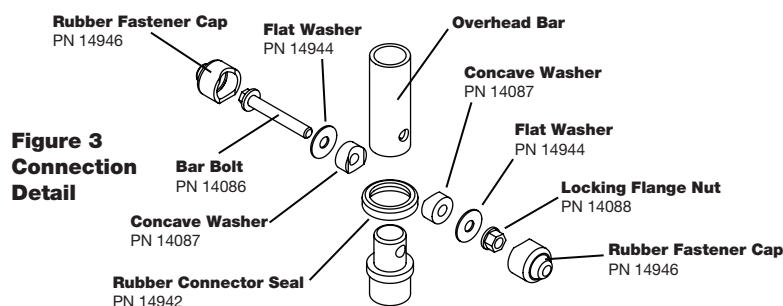


Figure 3
Connection Detail

5 Line Connections

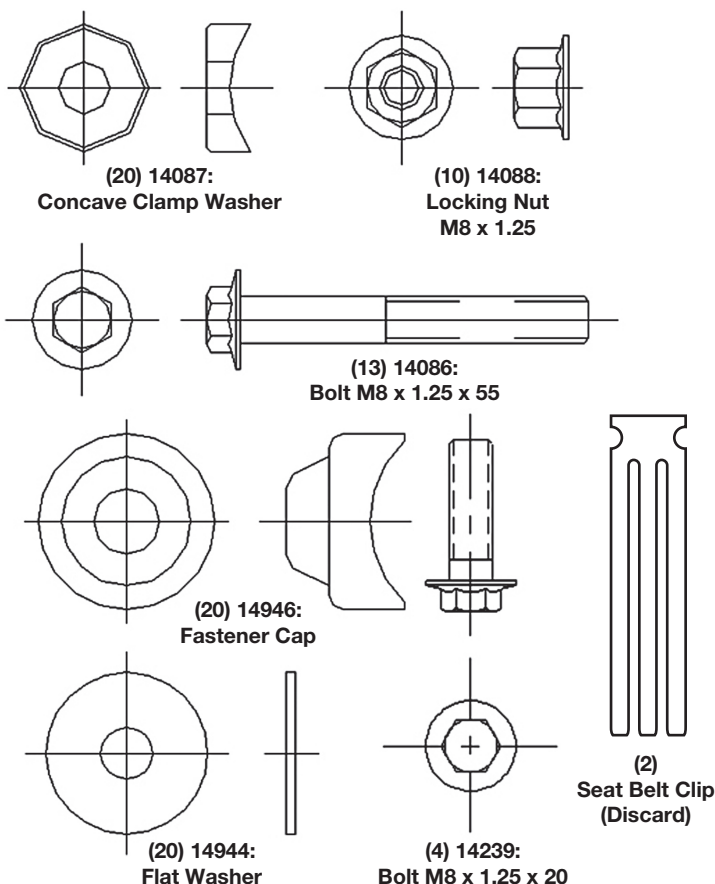
- The fuel tank (mounted to the C-Pillar) will have (2) hoses connected to a vacuum controlled fuel valve on the underside of the tank.
- Connect the lower hose to the plastic "Y" connector coming from the intake manifold of the engine.
- Connect the upper hose to the line coming from the carburetor with a white or clear fuel filter.
- Ensure that the hoses are fully seated with the clamps installed to prevent leaks.

6 Final Preparation

- Seat belts should be checked to ensure that they are not twisted or binding. As well, the forked seat belt retainer clips need to be removed and discarded. (Ref fastener illustration on this page)
- Fill the fuel tank with clean, fresh, mid-grade (89-93 Octane) gasoline per the supplied Owner/Operator Manual.
- Check the engine oil level and tire pressure per the supplied Owner/Operator Manual.

7 Sun Top Installation

- Unfold supplied canvas sun top and place on the overhead bars in the space between the front OH Crossbar, the Rear C Pillar and the RH and LH A Pillars.
- Install canvas to the bars by wrapping over the top of the tubes and attaching the Velcro.

Fastener Illustration**! WARNING**

Avoid risk of serious injury or death. It is important to first read and understand the Owner/Operator Manual and follow all instructions and warnings. If you do not understand this, or any other warning supplied with your vehicle, contact your dealer or ASW customer service at 1-800-643-7332 before using this vehicle.

INITIAL STARTUP INSTRUCTIONS**8 Battery Connection**

NOTE: Ensure that the connections are correct. Reversing the wires to the battery terminals may cause the inline fuse to blow.

- This unit has been supplied with a pre-charged battery. While every effort has been made to ensure that the battery will maintain its charge, it may require additional charging by the retailer or consumer. Additionally, the leads have been disconnected to preserve its charge. Prior to starting, the leads must be connected to the (+) and (-) terminals of the battery.
- Using a Phillips Screwdriver, connect the RED wire to the (+) battery terminal as indicated on the battery casing.
- Using a Phillips Screwdriver, connect the GREEN wire to the (-) battery terminal as indicated on the battery casing.

9 Initial (First Time) Startup

NOTE: Lost or stolen keys can be replaced by calling American Sportworks customer service at 1-800-643-7332.

- Check the engine oil level per the Owner/Operator Manual.
- Set the parking brake per the Owner/Operator Manual.
- Ensure that the vehicle is shifted into the NEUTRAL gear.
- Ensure that the parking brake is applied.
- Ensure that the engine stop switch (located on the rear swingarm on the electrical box) is in the "RUN" position
- While sitting in the vehicle, pump the accelerator pedal several times to ensure that it returns freely
- With one foot on the brake pedal, start the engine by turning the ignition key; holding for no longer than 5 second intervals, until the fuel line and carburetor fill with gas. *(Note: The unit is shipped with a dry carburetor and fuel line. Several starting intervals may be required in order to draw fuel into the carburetor)*
- After the unit has started, allow it to warm up for a period of 5 minutes before driving to allow the auto-enrichener (choke) to fully close. **DO NOT** depress the accelerator pedal during the warming period.
- **DO NOT** drive the unit until the Owner/Operator manual has been fully read and understood.

Contact American Sportworks Customer Service for questions or problems that may arise with the assembly and starting of this unit at 1-800-643-7332.