

Operator's Manual
SUPPLEMENT

⚠ WARNING:

Read Engine
Owner's Manual,
Vehicle Operator's
Manual, and
Supplement
Carefully Before
Operating Vehicle.

Parts List
Assembly

MODEL
596-00E

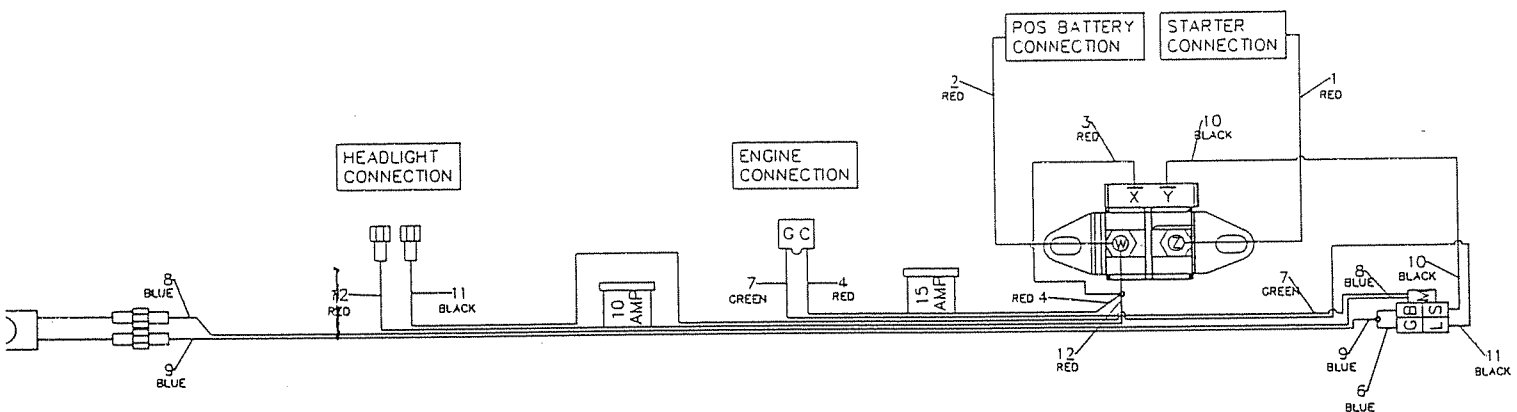
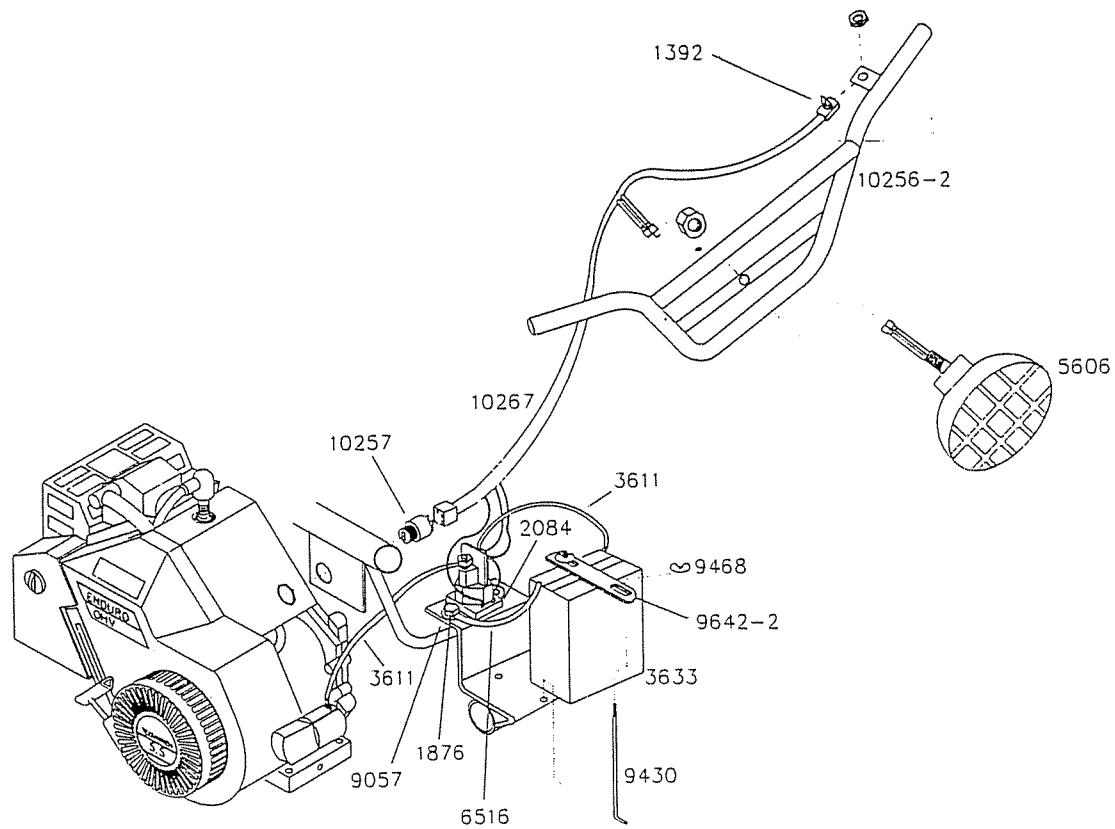
MANCO
PRODUCTS, INC.

4404 Engle Ridge Drive, Fort Wayne, IN
ph (219) 432-1596 fx (219) 432-7870

THIS VEHICLE IS FOR
OFF-ROAD USE ONLY

BEFORE OPERATING THIS VEHICLE, THE OWNER AND/OR OPERATOR MUST UNDERSTAND THE VEHICLE WAS NOT DESIGNED OR MANUFACTURED TO MEET SPECIFICATIONS FOR USE ON PUBLIC ROADS, STREETS, HIGHWAYS, OR THOROUGHFARES AND HAVE READ AND HAVE AN UNDERSTANDING OF ALL THE INSTRUCTIONS FOR SAFE ASSEMBLY AND OPERATION AS WELL AS THE INSTRUCTIONS GOVERNING THE ENGINE AND OTHER PORTIONS OF THE VEHICLE.

| <u>PN</u> | <u>DESCRIPTION</u> | <u>PN</u> | <u>DESCRIPTION</u> | <u>PN</u> | <u>DESCRIPTION</u> |
|-----------|-----------------------------------|-----------|------------------------------------|-----------|--------------------------------------|
| 1013 | Grip, Right Side Twist | 5036 | Extension Spring, 3" Long x .375OD | 5414 | Bearing, 1" ID x 2" OD w/ Flange |
| 1014 | Grip, Left Side Stationary | 5090 | Bearing, 5/8ID w/ Snap Ring | 5597 | Mud Guard |
| 1018 | Cable Stop | 5216-5 | Calliper Support, Red | 5602 | Plastic Cover |
| 1019 | Cable Tie | 5220-5 | Fork, Red | 5604 | Decal Set, Trail Sport |
| 1049 | Decal, No Foot On Drive Cover | 5222 | Spacer 1 ID x 1-1/4 OD x 1-1/4 Lg | 5605 | Hose Fitting, 1/4 NPT 1/4 Hose |
| 1104 | Spacer 5/8 ID x 14G x 1" Long | 5223 | Tire and Wheel, 22/11 x 8" | 5606 | Headlight, 12v, 50w |
| 1115 | Washer, 1/4 Split Lock | 5224 | Hub, Rear | 5607 | Hose Clamp, 7/16 |
| 1124 | Washer, 5/16 Split Lock | 5225 | Hub, Front | 5957 | Driver Pulley, 30 Ser |
| 1128 | Nut, 3/8-16 | 5226 | Brake Calliper | 5958 | Driven Pulley, 30 Ser |
| 1163 | Nut, 5/8-18 Center Lock Jam | 5227 | Brake Disc 10.37" OD | 5959 | Drive Belt, 30 Ser |
| 1194 | Washer, 3/4 Flat | 5228 | Sprocket, 420P x 80T | 5964 | Decal, No Oil In Crankcase |
| 1263 | Nut, 5/16-18 Whiz Flange | 5229 | Chain, #420 116P Including ML | 6317 | Jackshaft, 5/8 OD x 14-1/4" |
| 1392 | Switch, toggle | 5233 | Axle, Rear 19-5/32" | 6516 | Black battery cable 9". 25/.25 |
| 1398 | Washer, 21/64ID x 1/8Thick | 5234 | Axle, Front 17-9/32" | 6573 | Bolt, 5/16-18 x 1-3/4 GR 5 |
| 1452 | Tire, 22/11 x 8" Knobby | 5237 | Drive Cover Plate | 9006 | Bolt, 1/4-20 x 1/2 Whiz Flange |
| 1454 | Bolt, 5/16-24 x 1-3/4 GR 5 | 5238 | Nut, M10 1.5 Flange | 9057 | Nut, 1/4-20 Top Lock |
| 1469 | Washer, 5/8ID x 1/16Thick | 5239 | Seat | 9060 | Washer, 5/16 Flat |
| 1628 | Throttle Cable Retainer | 5242 | Fender, Front | 9085 | Nut, 3/8-16 Top Lock |
| 1845 | Bolt, 1/4-20 x 5/8 GR 5 | 5243 | Fender, Rear | 9091 | Washer, 3/8 Flat |
| 1846 | Bolt, 1/4-20 x 3/4 GR 5 | 5244 | Fuel Tank | 9099 | Bolt, 3/8-16 x 1 GR 5 |
| 1848 | Bolt, 1/4-20 x 1-1/4 GR 5 | 5246 | Fuel Cap | 9101 | Bolt, 5/16-24 x .500 GR 5 |
| 1854 | Washer, #14 Flat | 5249 | Stem | 9150 | Nut, 1/2 Push |
| 1876 | Bolt, 1/4-20 x 5/8 Whiz Flange | 5250 | Headset, 30mm/34mm | 9162 | Nut, 3/4-10 Top Lock |
| 2084 | Solenoid | 5323 | Foot Pegs | 9186 | Bolt, 5/16-18 x 1-1/2 GR 5 |
| 2264 | Bolt, 5/16-18 x 3/4 GR 5 | 5324 | Chain Guard | 9430 | Battery hold down rod zinc |
| 2385 | Bolt, 3/8-16 x 4 GR 2 Full Thread | 5328-5 | Pivot Tube, Red | 9468 | Nut # 10-32 NL Wing |
| 2430 | Spanner, 5/8 ID x 7-1/8 Long | 5329-5 | Brake Lever, Red | 9642-2 | Battery clamp bar |
| 2449 | Nut, Tinnerman-1/4-20 | 5331 | Brake Rod, 18-11/16 | 9677 | Decal, Warning Hot Surfaces |
| 2832 | Decal, No Passengers | 5332 | Brake Rod, 4-1/16 | 9678 | Decal, Warning Exhaust Is Bad |
| 3403 | Key, 3/16 sq x 2" | 5338-5 | Center Stand, Red | 9877 | Bolt, M10 1.5 25 |
| 3611 | Starter cable | 5340 | Decal, Tire Pressure | 10255-7 | Frame, Green 596-00E |
| 3611 | Red battery cable | 5343 | Sprocket, 420P x 8 T x 5/8 ID | 10256-2 | Handlebar |
| 3633 | M2221 Motorcycle battery | 5344 | Spacer, 5/8 ID x 14g x 1/4 Long | 10257 | Start switch, 3 position, 5 terminal |
| 4504 | Decal, Warnings | 5345 | Throttle Cable | 10267 | Wire harness 596-00E |
| 4912 | Decal, Keep Chainguards In Place | 5349 | Engine, Tecumseh 6.0 hp E-Start | PX1079 | Extension Spring, 3" Long x .500 OD |



NOTE: PLASTIC CONNECTORS VIEWED FROM WIRE INSERTION END.

ASSEMBLY INSTRUCTIONS

General

1. Carefully unpack all parts from shipping containers.
2. Locate the Mini-Bike Operator's Manual and complete the information block on the back page.
3. Identify all parts to be assembled.
4. Reference the exploded view for correct assembly of all parts.

Handlebar Assembly

Remove the four (4) Allen head bolts in the top of the Stem (PN 5249) using a 6mm Allen Wrench.

Place the Handlebar (PN 5248) under the top plate of the Stem. Make sure the Handlebar Grips angle

toward the back of the vehicle and that it is centered on the Stem.

5. Replace the top plate and fasten with the four (4) Allen head bolts removed in Step 5.
6. Adjust the angle of the Handlebars so that the Operator has adequate reach throughout the entire rotation of the Forks. The Handlebars should not hit the Operator's knees or the Fuel Tank.
7. Ensure the bolts are tight.

Throttle Assembly

8. Remove the Cable Tie holding the Twist Grip (PN 1013) secure during shipping.
9. Rout the Throttle Cable as shown in Figure 1.

This Foot Peg Kit, PN 11659, is for Manco Products Inc. Models 595 and 596. The Kit includes the following:

| Qty | P.N. | Description |
|-----|---------|---------------------------|
| 2 | 11520 | Foot Peg |
| 2 | 3904-16 | Spacer |
| 2 | 8186 | Washer |
| 1 | 11659R1 | Installation Instructions |
| 2 | 9145 | 3/8-16 X 1.75 Bolt |
| 2 | 9085 | 3/8-16 Lock Nut |

Steps for Installation: (Refer to FIGURE 1)

1. If your bike has a bushing welded to each side of the bike frame for mounting the foot pegs, the hardware in this kit will not be required. Use the existing nuts and bolts for mounting the foot pegs.
2. If your bike has a slotted bracket for mounting the foot pegs, use the hardware furnished with this kit. Mount the foot pegs as shown in figure 1.

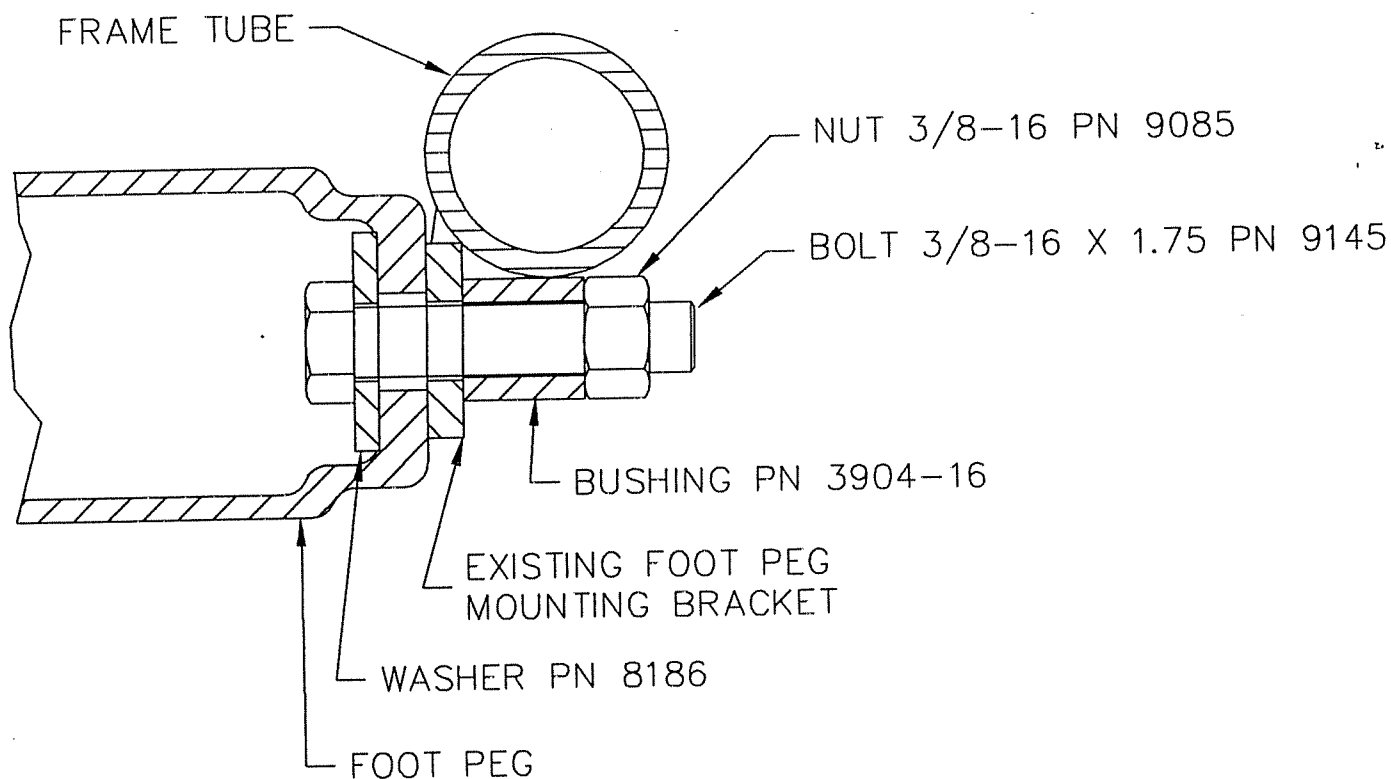


FIGURE 1