

Operator's Manual  
SUPPLEMENT  
Model No. 584B-0

**⚠ WARNING:**

Read Engine  
Owner's Manual,  
Vehicle Operator's  
Manual, and  
Supplement  
Carefully Before  
Operating Vehicle.

Parts List

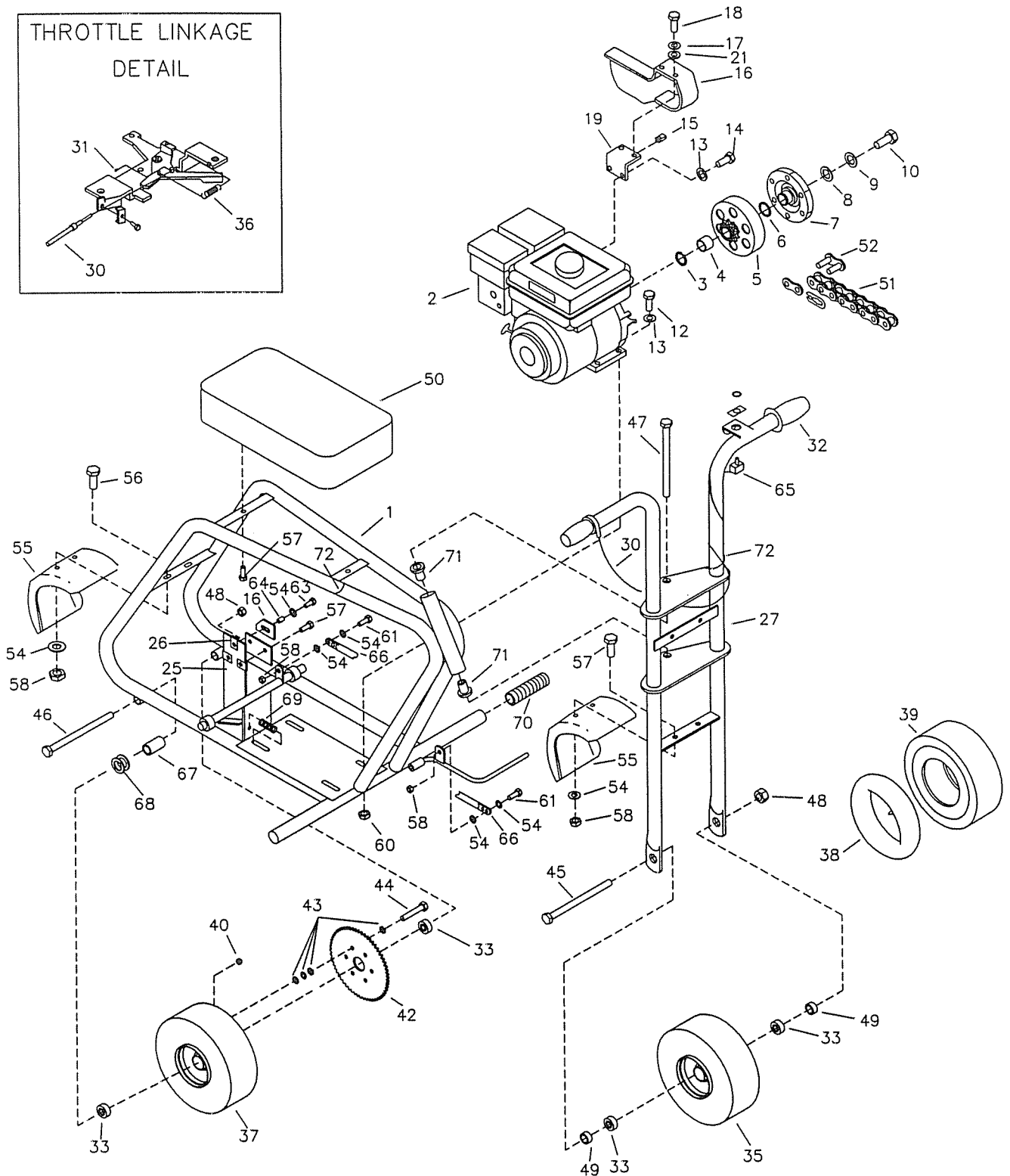
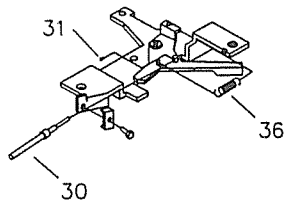


4404 Engle Ridge Drive, Fort Wayne, IN 46804  
ph (260) 432-1596      fx (260) 432-7870

**THIS VEHICLE IS FOR  
OFF-ROAD USE ONLY**

BEFORE OPERATING THIS VEHICLE, THE OWNER AND/OR OPERATOR MUST UNDERSTAND THE VEHICLE WAS NOT DESIGNED OR MANUFACTURED TO MEET SPECIFICATIONS FOR USE ON STREETS, HIGHWAYS, OR THOROUGHFARES AND HAVE READ AND HAVE AN UNDERSTANDING OF ALL THE INSTRUCTIONS FOR SAFE ASSEMBLY AND OPERATION AS WELL AS THE INSTRUCTIONS GOVERNING THE ENGINE AND OTHER PORTIONS OF THE VEHICLE.

# THROTTLE LINKAGE DETAIL



# PARTS LIST FOR MODEL 584B-0

REF NO.	PART NO.	DESCRIPTION	REF NO.	PART NO.	DESCRIPTION
1	12315-5	Frame	37	10379	WH ASM 5IN STL DR WH 4.10 X 3.50 STD
2	12245	Engine 4HP Rear Pull Throttle 3200RPM	38	1753	Tube, 5"
<b>ASM</b>	4335	Clutch, 35 Chain x 12 Tooth (Inc. #3 – 7)	39	2246	Tire, 4.10 - 3.50 x 5"
3	3141	Snap Ring	40	1189	Nut 5/16-18 Hex TL Z
4	3143	Bushing, Clutch	41	----	-----
5	4491	Drum w/ Sprocket (inc. REF 4)	42	8007-2	Sprocket, 35 Chain x 60 Teeth
6	3146	Washer, Fiber	43	9060	Washer 5/16 Type A Plain Sae N Z
7	4496	Clutch Rotor	44	9176	Bolt 5/16-18 X 1.000 HHCS G5 Z
8	8186	Washer .391ID X 1.25OOD X .12	45	9157	Bolt, 5/8-11 x 6.5"
9	1130	Washer 3/8 SL Z	46	2772	Bolt, 5/8-11 x 9.5"
10	9073	Bolt, 3/8-24 x 3/4"	47	1138	Bolt, 5/8-11 x 7.0"
11	----	-----	48	1046	Nut, 5/8-11 Top Lock
12	9186	Bolt, 5/16-18 x 1-1/2"	49	4266-16	Spacer, 5/8ID-11GA x 1-1/8"
13	9030	Washer, 5/16" Interlock	50	8594	Seat
14	9101	Bolt, 5/16-24 x 1/2"	51	2280	Chain, #35 x 116 Pitch (inc.#52)
15	5135	Nut, Clip	52	1269	Masterlink, #35 Chain
16	6495R	Chainguard, (inc. # 20-24,73)	53	----	-----
17	6039	Washer, #10 Internal Lock	54	1854	Washer, #14 Flat
18	6046	Bolt NBR 10-24 X .500 HHMS Z	55	2018-2	Fender
19	6480-2	Bracket, Chain Guard	56	5839	Bolt, 1/4-20 x 3/4" Whiz Flange
20	----	-----	57	9006	Bolt, 1/4-20 x 1/2" Whiz Flange
21	9104	Washer NBR 10 Flat STD Z	58	9057	Nut, 1/4-20 Lock
22	----	-----	59	-----	-----
23	----	-----	60	1263	Nut, 5/16-18 Whiz Flange
24	----	-----	61	1846	Bolt, 1/4-20 x 3/4"
25	6479-2	Cover Lower 580/584	62	-----	-----
26	2449	Nut, Tinnerman	63	1845	Bolt, 1/4-20 x 5/8"
27	6352-5	Handle Bar	64	9949	Bushing, 1/4" ID x 1/4" Long
<b>ASM</b>	11160	Grip Assembly	65	12305	Stopswitch ASM W/Nut & Plate
28	-----	-----	66	6336-2	Brake Rod
29	-----	-----	67	12093	Bushing 5/8 ID X 1/2 IN L Z
30	11525	Throttle Cable 56.25IN	68	1119	Spacer .625ID 1.062OD .125THK Z
31	12347	Swivel Screw For Robin	69	4365	Spring
32	11158	Grip, Dummy	70	2274	Grip, Foot
<b>ASM</b>	10376	WH ASM 5IN STL WH 4.10 X 3.50 STD	71	9507	Bushing
<b>ASM</b>	12104	WH ASM 5 IN STL DR WH	72	1019	Ty-Wrap
33	5090	Bearing 5/8 ID 1-3/8 OD Snap Ring	73	----	-----
34	----	-----	<b>NI</b>	12268	Engine Owner's Manual
35	10376	WH ASM 5IN STL WH 4.10 X 3.50 STD	<b>NI</b>	4198	Mini-Bike Operator's Manual
36	12348	Return Spring	<b>NI</b>	11330	Decal Sheet – Warnings (LARGE)

**ASM** = Assembly  
**NI** = Not Illustrated

# ASSEMBLY PROCEDURES

## GENERAL

1. Carefully unpack all parts from shipping containers.
2. Locate and unpack the Mini-Bike Operator's Manual.
3. Complete the information block on the back page of the Operator's Manual.
4. Identify and verify all parts in the Parts Pack.
5. Reference the Exploded View for correct assembly of all parts.

## FRONT WHEEL ASSEMBLY

NOTE: For easier assembly, complete step 2 listed under Miscellaneous Assembly.

1. Insert one Bolt (REF 45) through the Fork Assembly lower Axle mounting hole. Place one Spacer (REF 49) on the Bolt. Insert the Bolt into the Front Wheel Assembly. HINT: If the bolt will not slide into the Front Wheel Assembly, insert a long screw driver, or similar object, from the other side of the Axle. Use the screw driver to move the internal spanner so that it does not interfere with the Bolt. Place the remaining Spacer on the Bolt. Insert the Bolt through the other hole in the Fork Assembly and secure with one Nut (REF 48). Tighten until all side play is removed from the Front Wheel Assembly. Ensure that the Wheel rotates freely.

## THROTTLE ASSEMBLY

The Twist Grip Assembly must be mounted on the Handlebar before the Fork Assembly is mounted to the Frame. The length of the Throttle Cable will not allow assembly in reverse order.

1. Remove the rear-most Ty-Wrap holding the Twist Grip (REF 28) and Stop Switch (REF 65) secure during shipping. Discard the Ty-Wrap. Also remove the Ty-Wrap holding the two Handlebar Grips together. Discard the Ty-Wrap. Slide the Dummy Grip (REF 32) onto the Left Handlebar.
2. Separate the Throttle Cable and Stop Switch Wire. Lay the Stop Switch to the Left side of the Frame. Rout the Throttle Cable (REF 29), as shown in Figure
3. Loosen the two Screws on the Twist Grip. Slide the Twist Grip all the way onto the Right Handlebar. Do not tighten the Screws at this time.
4. Slide the Twist Grip all the way onto the Right Handlebar, then back off approximately 1/4". This will ensure that the Twist Grip will not bottom out on the end of the Handlebar.
5. Rotate the Twist Grip so that the Throttle Cable points downward and slightly ahead. The Throttle Cable and Housing should form a smooth curve from the Twist Grip to the upper Frame tube, see Figure 1. Tighten the two Screws in the Twist Grip securely.

1, along the Top, Right side of the Frame, and between the Upper Crown Plate and Front Plate Mounting Bracket.

## FORK ASSEMBLY

1. Place one Bushing (REF 71) in each end of the Frame Pivot Tube. HINT: The Bushings may be held in place with a small strip of tape. Do not place tape over the hole.
2. To mount the Fork Assembly to the Frame, align the Fork Pivot Holes with the Frame Pivot Tube and insert the Bolt (REF 47) through the Fork Holes and Bushings. Ensure the Throttle Cable is to the right of the Pivot Tube, see Figure 1. It may be necessary to tap the head of the Bolt with a hammer to seat it in position against the Nut welded to the bottom side of the Lower Fork Plate. Tighten the Bolt until there is no play between the Fork and the Pivot Tube but will still allow the Fork to rotate freely.



WARNING: The Fork must be able to rotate freely for safe operation.

## THROTTLE ASSEMBLY CONTINUED

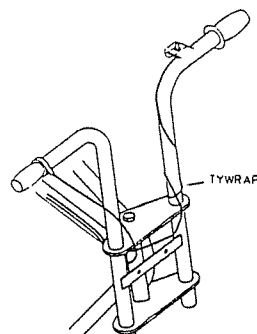


Figure 1: Routing Diagram



**CAUTION:** Rotate the Twist Grip counterclockwise to the full open position and release it to insure that it snaps back to the idle position. The Twist Grip must rotate easily in both directions to ensure safe operation. If the Twist Grip does not rotate easily in both directions, repeat the assembly procedure.



**CAUTION:** The Engine is shipped without oil in the crankcase.

### STOP SWITCH ASSEMBLY

1. Rout the Stop Switch Wire (REF 65), as shown in Figure 1, along the Top, Right side of the Frame, under the Top Crown Plate, and between the Pivot Tube and Right Fork Tube. Wrap the Wire around the Left Handlebar one time. Remove the Nut and On/Off Plate from the Stop Switch. Pass the Stop Switch up through the mounting hole on the Handlebar. Replace the On/Off Plate and the Nut. Work any slack in the Stop Switch Wire towards the Pivot Tube and apply one Ty-Wrap (REF 72) as shown in Figure 1. Securely tighten the Nut.

2. Turn the Handlebar through its full range of movement to ensure that neither the Throttle Cable Housing nor the Stop Switch Wires bind, stretch, or are pinched in the process. Correct any problems.

### SEAT ASSEMBLY

1. Mount the Seat to the Frame using two Bolts (REF 57). Fasten securely. Do not over tighten.

### MISCELLANEOUS ASSEMBLY

1. Mount the Face Plate to the Forks using the following hardware found in the hardware pack: 2 Bolts (1/4-20 x 1/2"), two Washers (#14, Flat), and two Nuts (1/4-20 Lock). The Washers should be positioned between the Bolts and the Face Plate. Tighten securely.

2. Mount the Front Fender (REF 55) to the Forks using two Bolts (REF 57), two Washers (REF 54), and two Nuts (REF 58). The Washers should be positioned between the Nut and the Fender. Tighten securely.

3. Slide Foot Grips (REF 70) onto the Frame.

### PRE-RIDE MAINTENANCE

1. Carefully and completely read the Engine Owner's Manual. Fill the Engine Crankcase with oil as described in the Engine Owner's Manual.

2. Carefully and completely read the Mini-Bike Operator's Manual. Follow the Pre-Ride Inspection steps. Fill the Fuel Tank with Fuel and lubricate appropriate points as described in the Mini-Bike Operator's Manual.

3. If there are any problems or discrepancies, contact your Dealer or the Customer Service Department at Manco Products, Inc.

### NOTES