

Operator's Manual
SUPPLEMENT
Model No. 485B-1X
486C-1X

⚠ WARNING:

Read Engine
Owner's Manual,
Vehicle Operator's
Manual, and
Supplement
Carefully Before
Operating Vehicle.

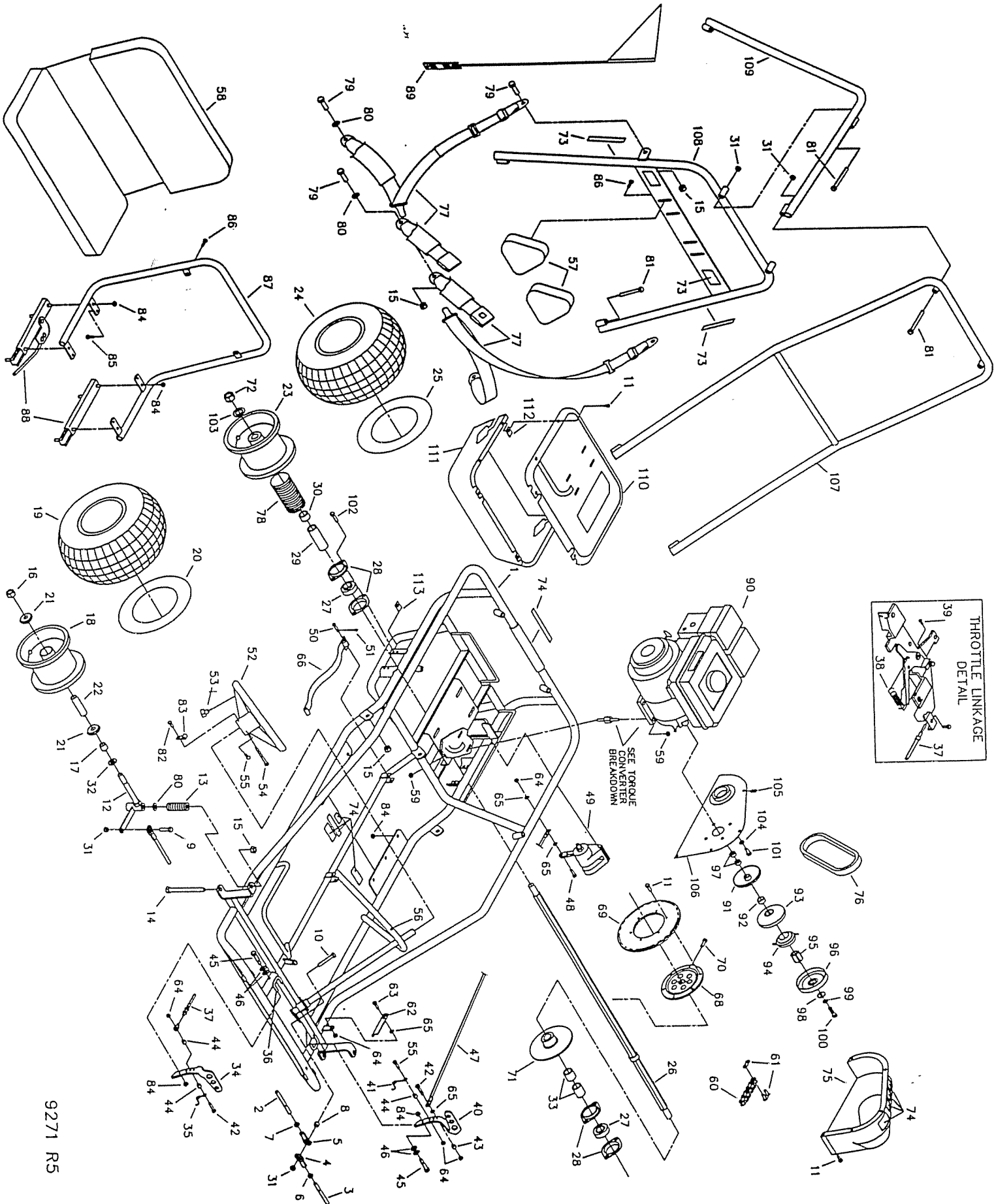
Parts List



4404 Engle Ridge Drive, Fort Wayne, IN 46804
ph (219) 432-1596 fx (219) 432-7870

**THIS VEHICLE IS FOR
OFF-ROAD USE ONLY**

BEFORE OPERATING THIS VEHICLE, THE OWNER AND/OR OPERATOR MUST UNDERSTAND THE VEHICLE WAS NOT DESIGNED OR MANUFACTURED TO MEET SPECIFICATIONS FOR USE ON STREETS, HIGHWAYS, OR THOROUGHFARES AND HAVE READ AND HAVE AN UNDERSTANDING OF ALL THE INSTRUCTIONS FOR SAFE ASSEMBLY AND OPERATION AS WELL AS THE INSTRUCTIONS GOVERNING THE ENGINE AND OTHER PORTIONS OF THE VEHICLE.



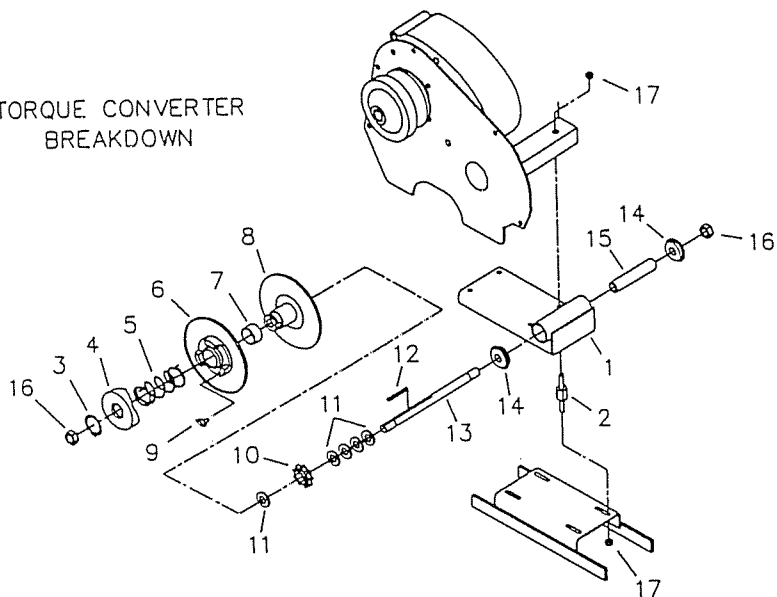
THROTTLE LINKAGE
DETAIL

PARTS LIST MODELS 485B-1 & 486C-1

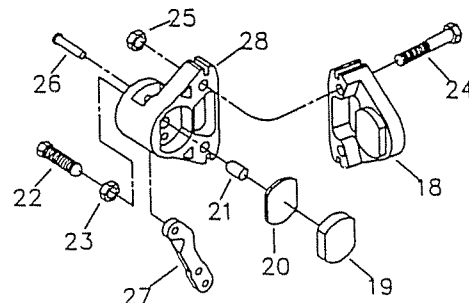
REF	PN	DESCRIPTION	REF	PN	DESCRIPTION	REF	PN	DESCRIPTION
1	12261-2	FRAME WELDMENT, BLACK	40	6293-16	PEDAL, BRAKE TRIMMED	85	9189	BOLT, 1/4-20 X .875 WHIZ FLANGE
ASM	10889	THE ROD ASM LONG (INCL. 2, 4-7)	41	9502	SPRING, PEDAL LEFT WOUND	86	1876	BOLT 1/4-20 X .625 WHIZ FLANGE
ASM	5020	THE ROD ASM SHORT (INCL. 3-7)	42	1848	BOLT, 1/4-20 X 1.25"	87	9968-2	SEAT FRAME WELDMENT BLACK
2	10868	THE ROD 19.0	43	6349	BUSHING, 5/16 OD X 22G	88	6734	SEAT SLIDE PR - SHORT
3	5004	THE ROD 7.25	44	1389	BUSHING, 1/4 ID X .313	89	8445	FLAG SAFETY W/ BRKT 3FT
4	1415	THE ROD END LH THREAD	45	1447	BOLT, 3/8 X 1-1/8 SHOULDER	90	12247	ENGINE 5HP OHC (485B-1)
5	1414	THE ROD END RH THREAD	46	9091	WASHER, FLAT 3/8 SAE N	ASM	12250	ENGINE 6.5HP OHC W/COIL (486C-1)
6	9024	NUT, 3/8-24 JAM LH THREAD	47	12318-2	BRAKE ROD BLACK	91	5957	DRIVER PULLEY ASM (INCL. 91-96)
7	9092	NUT, 3/8-24 JAM RH THREAD	48	1847	BOLT, 1/4-20 X 1"	92	200349	STATIONARY SHEAVE
8	9674-16	SPACER, 3/8 ID X 3/8 LONG	49	9597	BRAKE CALIPER ASSEMBLY	93	---	MOVEABLE SHEAVE
9	9146	BOLT, 3/8-16 X 1.50	50	9118	PIN, CLEVIS 1/4 X 1.250 Z	94	---	SHOE ASSEMBLY
10	9158	BOLT, 3/8-16 X 2.25	51	9116	PIN, COTTER 3/32 X .750 Z	95	---	HUB
11	9006	BOLT, 1/4-20 X .50 HEX FLANGED WHIZ	52	6038	STEERING WHEEL	96	---	DRUM
NI	10548-22	SPINDLE WELDMENT LEFT BLACK	53	9799	STOP SWITCH WIRE ASM	97	1938	SPACER, 3/4" I.D. X 3/8" LONG
12	10549-22	SPINDLE WELDMENT RIGHT BLACK	NI	12273	WIRE HARNESS	98	1398	WASHER, 21/64 ID X 1 1/4 X 1/8
13	9709	COMPRESSION SPRING	54	9080	BOLT, 1/4-20 X 2.750	99	1124	WASHER, 5/16" SPLITLOCK
14	5662	BOLT, 1/2-13 X 5.500	55	9160	BOLT, 1/4-20 X .875	100	8204	BOLT, 5/16-24 X 2-1/4"
15	1012	NUT, 1/2-13 TOPLOCK	56	9796	BOLT, #12-24 X .500 SELF TAPPING	101	9101	BOLT, 5/16-24 X 3/4" LONG
16	1046	NUT, 5/8-11 TOPLOCK	57	6320	HEADREST PAD	102	2264	BOLT, 5/16-18 X 3/4" LONG
17	1104	SPACER SPLIT .8120D .625ID 1.000L	58	11359	SEAT BACKBOTTOM	103	1194	WASHER, 3/4" SAE FLAT
18	9309FP	WHEEL ASSEMBLY, IDLE (INCL. 19-22)	59	1263	NUT 5/16-18 HEX FLANGED WHIZ	104	9060	WASHER, 5/16 FLAT
19	4915	TIRE 145/70 X 6" KNOBBY	60	6511	CHAIN 420 X 66 ML	105	8227	NUT, 1/4-20 TINNERMAN
20	3802	INNER TUBE 6" (REPAIR PART ONLY)	61	2037	MASTERLINK 420 CHAIN	106	11775-2	PLATE COVER 2XX4XX GBLK
21	5090	BEARING, 5/8" I.D.	62	1982-2	PEDAL LATCH, BLACK	107	10537-2	OVERHEAD BAR WELDMENT BLACK
22	5950	SPANNER, 5/8" I.D. X 2-1/8"	63	1846	BOLT, 1/4-20 X .750	108	10544-2	CENTER BAR WELDMENT BLACK
23	6289PH	WHEEL ASM 16/8 X 7 HEX BLACK (485)	64	9057	NUT, 1/4-20 TOPLOCK	109	10541-2	REAR BAR WELDMENT BLACK
	10381	WH ASM 8IN STL HEXWH 18X950 KN (486)	65	1854	WASHER, #14 FLAT MS Z	110	12287	COVER TOP 48X
24	9607	TIRE, 16/8 X 7 KNOBBY (485)	66	4372	HANDHOLD STRAP	111	12288	COVER BOTTOM 48X
	3548C	D-TIRE 18/9.5 X 9 - CARLISLE (486)	67	---	---	112	11824	NUT TINNERMAN 2372-04
25	9609	TUBE 16/8, 0 X 7 (REPAIR ONLY) (485)	68	6280H	SPROCKET HUB HEX	113	2449	NUT TINNERMAN C7343-1420-4
	1430	TUBE 18/9.5 X 8 (REPAIR ONLY) (486)	69	9338	SPROCKET, 420 X 60 TEETH	NI	1019	CABLE TIE
26	12316	AXLE SHAFT HEX 48X (485)	70	6701	BOLT 5/16-18 X 1.250 SHCS	NI	8746M	SAFETY VIDEO
	12359	AXLE BUILD 486C	71	9511H	BRAKE DISK	NI	4350	OPERATOR'S MANUAL
27	3941H	BEARING, SEALED 7/8" HEX	72	9162	NUT, 3/4" TOPLOCK HEX	NI	12283	RUNNING LIGHT ASM 4XX
28	1760	BEARING FLANGE	73	11329	DECAL SHEET, CENTER BAR WARNINGS			
29	1448-16	SPACER 1.000ID 3.563L (485)	74	11330	DECAL SHEET, ENGINE AND MAIN FRAME WARNINGS			
	4662-16	SPACER 1.000ID 4.250L (486)	75	11776	TAV COVER 2XX4XX			
30	2265-16	SPACER, 1" I.D. X 3/4" (485)	76	5959	DRIVE BELT			
	5222-16	SPACER 1" ID X 1.250L - ZINC (486)	77	8373	SEAT BELT - SHOULDERLAP			
31	9085	NUT, 3/8-16 TOPLOCK HEX	78	---	---			
32	1119	SPACER .625ID 1.0620D .125THK Z	79	9188	BOLT, 1/2-13 X 1.50			
	2265-16	SPACER 1" ID .750L	80	9022	WASHER, 1/2 FLAT			
33	2265-16	SPACER 1" ID .750L	81	2386	BOLT, 3/8-16 X 3.50			
34	6309-16	PEDAL, THROTTLE TRIMMED	82	5287	BOLT #10-16 X .375 SELF TAPPING			
35	9503	SPRING, PEDAL RIGHT WOUND	83	5288	WIRE CLAMP			
36	9929	RUBBER CAP .25ID X .25 BLACK	84	1189	NUT, 5/16-18 HEX TOPLOCK			
37	8251	THROTTLE CABLE 74.50 INCH						
38	12347	SWIVEL SCREW						
39	12348	RETURN SPRING						

ASM = ASSEMBLY
NI = NOT ILLUSTRATED

TORQUE CONVERTER
BREAKDOWN



CALIPER BREAKDOWN



REF	PART #	DESCRIPTION
1	11806-2	CHASSIS WELDMENT, BLACK
2	1356	STUD ASSEMBLY
3	2477	RETAINING RING
4	-----	CAM
5	6805	SPRING
6	-----	MOVEABLE SHEAVE
7	-----	BUSHING
8	-----	STATIONARY SHEAVE
9	6804	BUTTON, NYLON
10	8720	SPROCKET, 9-TEETH INT. KEY
11	1119	SPACER, 5/8" I.D. X 1/8"
12	3403	KEY, 3/16" SQ. X 2"
13	2777	JACKSHAFT, 5/8" X 10.00
14	5090	BEARING, 5/8" I.D.
15	10342	SPANNER, 5/8" I.D. X 4-13/16"
16	1136	NUT, 5/8-18 CENTERLOCK HEX JAM
17	1263	NUT, 5/16-18 FLANGED WHIZ
ASM	9597	BRAKE CALIPER ASSEMBLY
ASM	9810	BRAKE PAD SERVICE KIT
18	-----	ANVIL WITH LINING
19	-----	BRAKE LINING
20	3928	BACKING PLATE
21	3930	ACTUATOR PIN
22	3931	ADJUSTOR PIN
23	3932	NUT, JAM
24	9158	BOLT, 3/8-16 X 2-1/4"
25	9058	NUT, 3/8-16 TOPLOCK HEX
ASM	6534	MB-1 SEVRVICE KIT
26	-----	GROOVE PIN
27	-----	LEVER
28	-----	BRAKE HOUSING