

Operator's Manual SUPPLEMENT

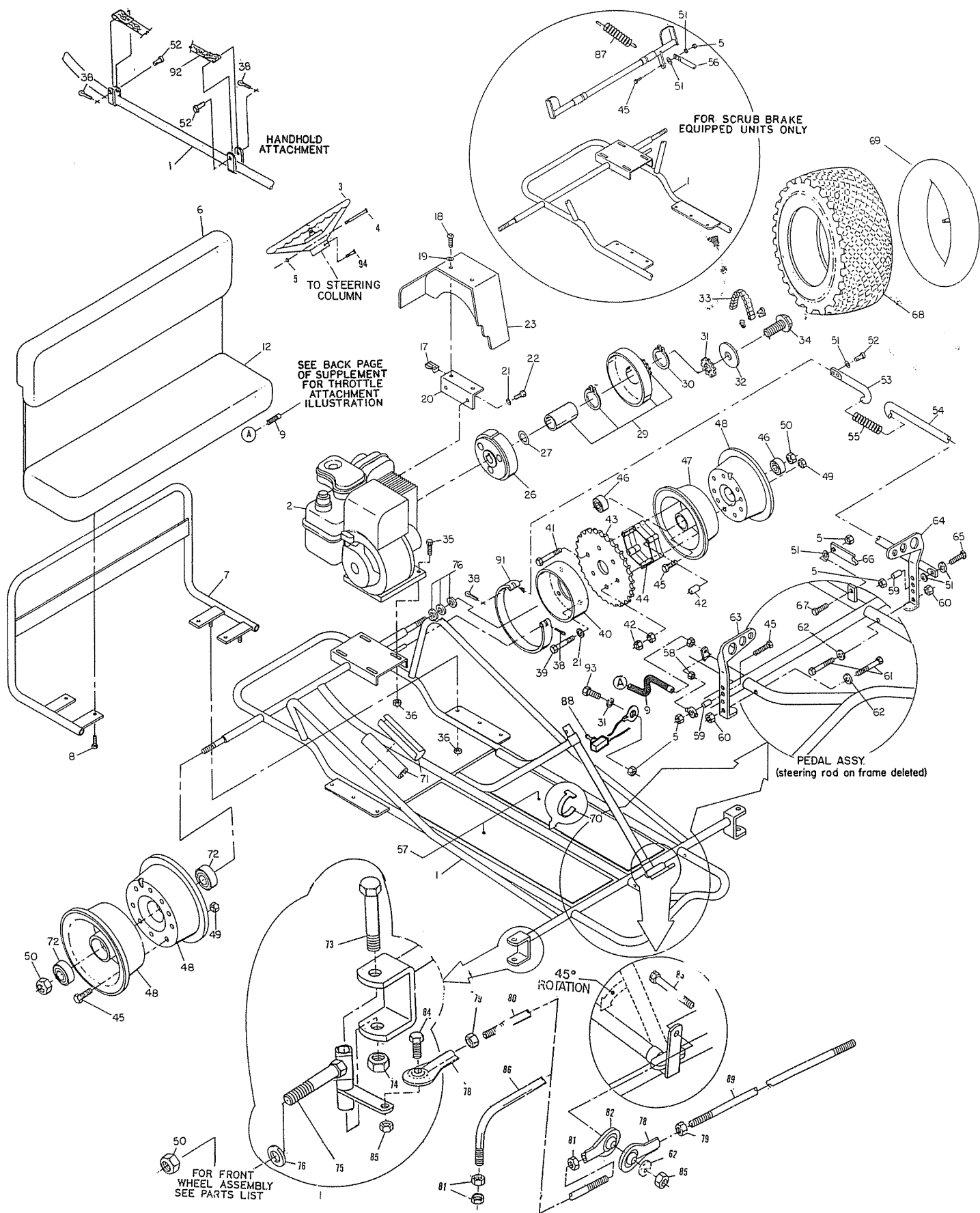
MANCO MODEL NO.
415

FILE
JUL 22 1991



MANCO
PRODUCTS, INC.

4404 Engle Ridge Drive Ft. Wayne, Indiana 46804 219-432-1596

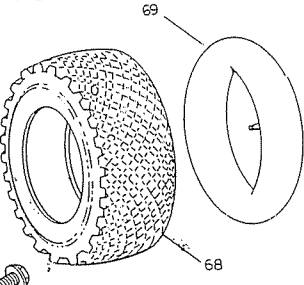


HANDHOLD ATTACHMENT

TO STEERING COLUMN

SEE BACK PAGE OF SUPPLEMENT FOR THROTTLE ATTACHMENT ILLUSTRATION

FOR SCRUB BRAKE EQUIPPED UNITS ONLY



PEDAL ASSY. (steering rod on frame deleted)

45° ROTATION

FOR FRONT WHEEL ASSEMBLY SEE PARTS LIST

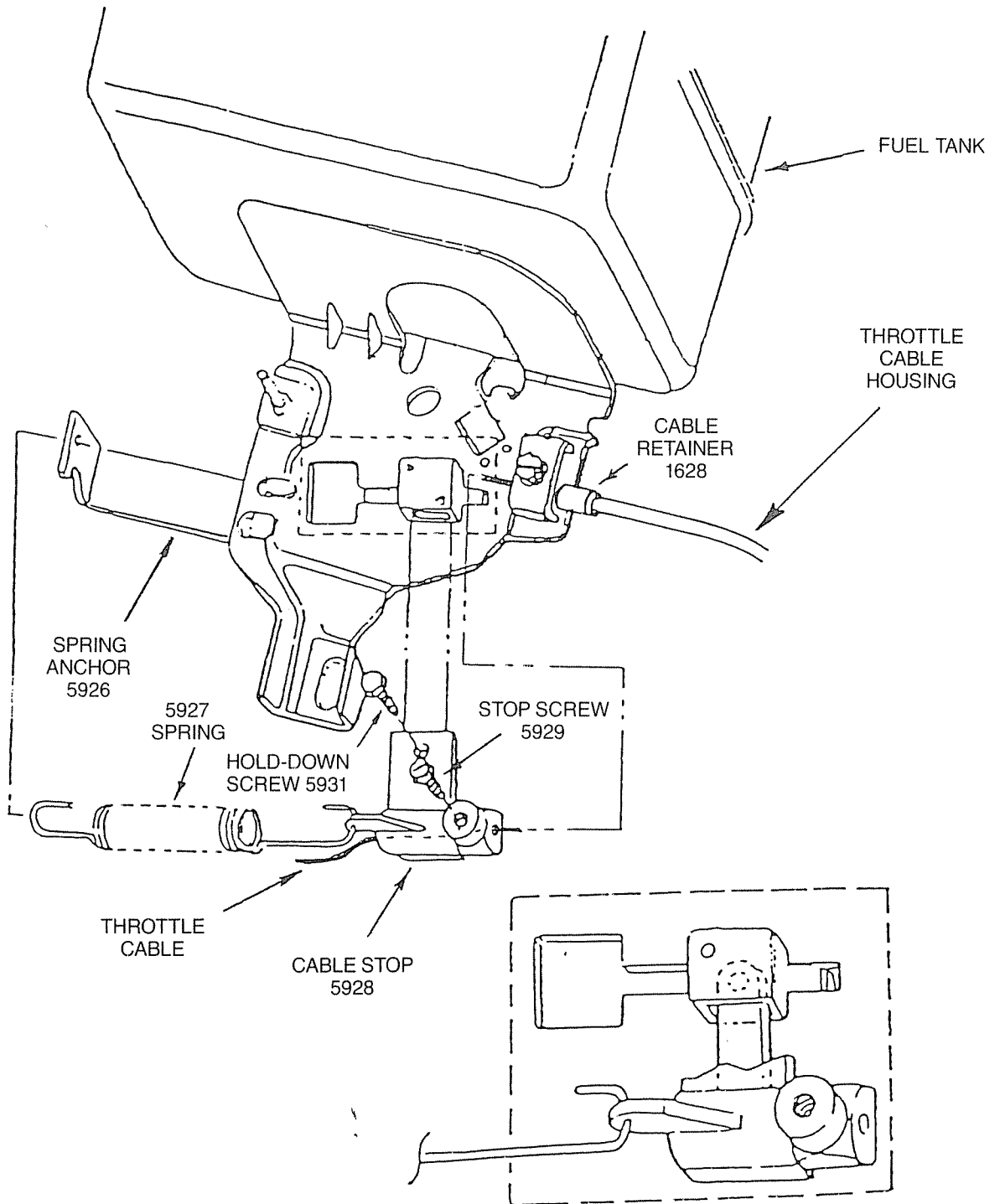
REPAIR PARTS

Model 415

REF. NO.	PART NO.	DESCRIPTION	REF. NO.	PART NO.	DESCRIPTION
1	3318-2	Frame	58	9058	5/16-24 Hex Jam Nut
2	6010	Engine	59	1389	Bushing
3	6038	Steering Wheel	60	1189	5/16-18 Hex Locknut
4	9080	1/4-20 x 2-3/4 Hex Cap Screw	61	9110	3/8 Shoulder Bolt
5	9057	1/4-20 Hex Toplock Nut	62	9091	3/8 Std. Flat Washer
6	4328	Seat Back	63	8011	Throttle Pedal
7	3325-2	Seat Frame	64	8009	Brake Pedal
8	1876	1/4-20 x 5/8 Hex Fl. Whizlock Screw	65	1847	1/4-20 x 1 Hex Cap Screw
9	1390	Throttle Cable	66	1982	Pedal Latch
NI	1628	Cable Retainer	67	1845	1/4-20 x 3/8 Hex Cap Screw
11		Not Used	68	2246	Tire 4.10 x 3.50 x 5
12	4327	Seat Bottom/Flap	69	1753	Innertube 4.10 x 3.50 x 5
13		Not Used	70	1019	Tywrap
14		Not Used	71	6126	Arm Pad
15		Not Used	72	1419	Bearing
16		Not Used	73	1264	1/2-13 x 3 1/2 Hex Cap Screw
17	5135	#10-24 Tinnerman Nut	74	1012	1/2-13 Hex Toplock Nut
18	6046	#10-24 x 1/2 Truss Head Screw	75	8021	R.H. Spindle
19	6039	Internal Lock Washer	NI	8020	L.H. Spindle
20	3363-2	Chainguard Bracket	76	1650	5/8 I.D. Flat Washer
21	9030	5/16 Int. Lockwasher	77		Not Used
22	9101	5/16-24 x 1/2 Nylock Hex Cap Screw	78	1415	Rod End, L.H.
23	3362	Chainguard	79	9024	3/8-24 L.H. Hex Jam Nut
24		Not Used	80	5003	Tie Rod (Long)
25		Not Used	81	9092	3/8-24 R.H. Hex Jam Nut
26	4496	Clutch Center	82	1414	Rod End, R.H.
27	3146	Fiber Washer	83	9158	3/8-16 x 2 1/4 Hex Cap Screw
28		Not Used	84	9146	3/8-16 x 1 1/2 Hex Cap Screw
29	4491	Drum With Sprocket	85	9085	3/8-16 Toplock Hex Nut
30	3141	Shaft Snap Ring	86		Not Used
ASM	4335	Clutch (inc. ref. #26-30)	87	4365	Spring
31	9001	3/8 Int/Ext Lockwasher	88	4419	Stopswitch/Wire
32		Not Used	89	4356	Tie Rod
33	8050	Chain	90		Not Used
34	1491	5/16-24 x 3/4 Hex Cap Screw	91	1036	Brake Band
35	1122	5/16-18 x 1 1/2 Hex Cap Screw	92	4372	Handhold
36	1263	5/16-18 Hex Fl. Whizlock Nut	93	1003	1/4-20 x 1/2 Hex Cap Screw
37		Not Used	94	9160	1/4-20 x 1 Hex Cap Screw w/Nylock
38	9116	3/32 Dia. x 3/4 Lg. Cotter Pin	NI	1053	4" Inner Tube
39	9000	5/16-18 x 3 1/2 Hex Cap Screw	NI	2244	4.10-3.50 x 4 Knobby Tire
40	1246	Brake Drum	NI	5158	Wheel Half, 4"
41	5791	5/16-18 x 2 1/4 Hex Cap Screw	ASM	4371	Drive Wheel (inc. ref. #21 39-49, 68, 69)
42	1128	3/8-16 Hex Nut			
43	8007	Sprocket	ASM	4337	Drive Wheel (Scrub Brake Models Only)
44	8008	Sprocket Spacer	ASM	2247	Non-Drive Wheel (inc. ref. #45, 48, 49, 68, 69, 72)
45	5839	1/4-20 x 3/4 Hex Cap Screw			
46	1093	Bearing	ASM	2243	Front Wheel (inc. ref. #45, 49, 72 and NI part nos. 1053, 2244, and 5158)
47	8006	Wheel Half, 5" Tapped			
48	8004	Wheel Half, 5" Untapped	ASM	4358	Tie Rod, L.H. (Short)
49	1186	1/4-20 Hex Whizlock Nut	ASM	4359	Tie Rod, R.H. (Long)
50	1046	5/8-11 Hex Locknut			
51	1854	1/4 Std. Flat Washer			
52	9118	1/4 Dia. x 1 1/4 Lg. Clevis Pin			
53	4351	Brake Rod, Rear			
54	2377	Brake Rod, Front			
55	5681	Compression Spring			
56	5097	Brake Rod			
57		Decal Set			

NI = not illustrated
ASM = Assembly

THROTTLE CABLE INSTALLATION



ASSEMBLY: Pass the throttle cable through the cable retainer and butt the throttle cable housing end against the inside shoulder of the cable retainer. (The cable retainer is to be securely fastened to the engine with the clamping screw.) Pass the end of the Throttle Cable through the hole in the cable stop. Before tightening cable stop screw:

1. Ensure spring anchor, spring, and cable are installed as illustrated above.
2. Ensure throttle pedal is in rearward (idle) position.
3. Ensure that there is no slack in the throttle cable with *no* tension applied to return spring.
4. Ensure cable housing is inside and against the cable retainer.