

# Operator's Manual SUPPLEMENT

MANCO MODEL NO.  
388-15

**WARNING:**  
Read Engine  
Owner's Manual,  
Vehicle Operator's  
Manual, and  
Supplement  
Carefully Before  
Operating  
Vehicle.

Parts List

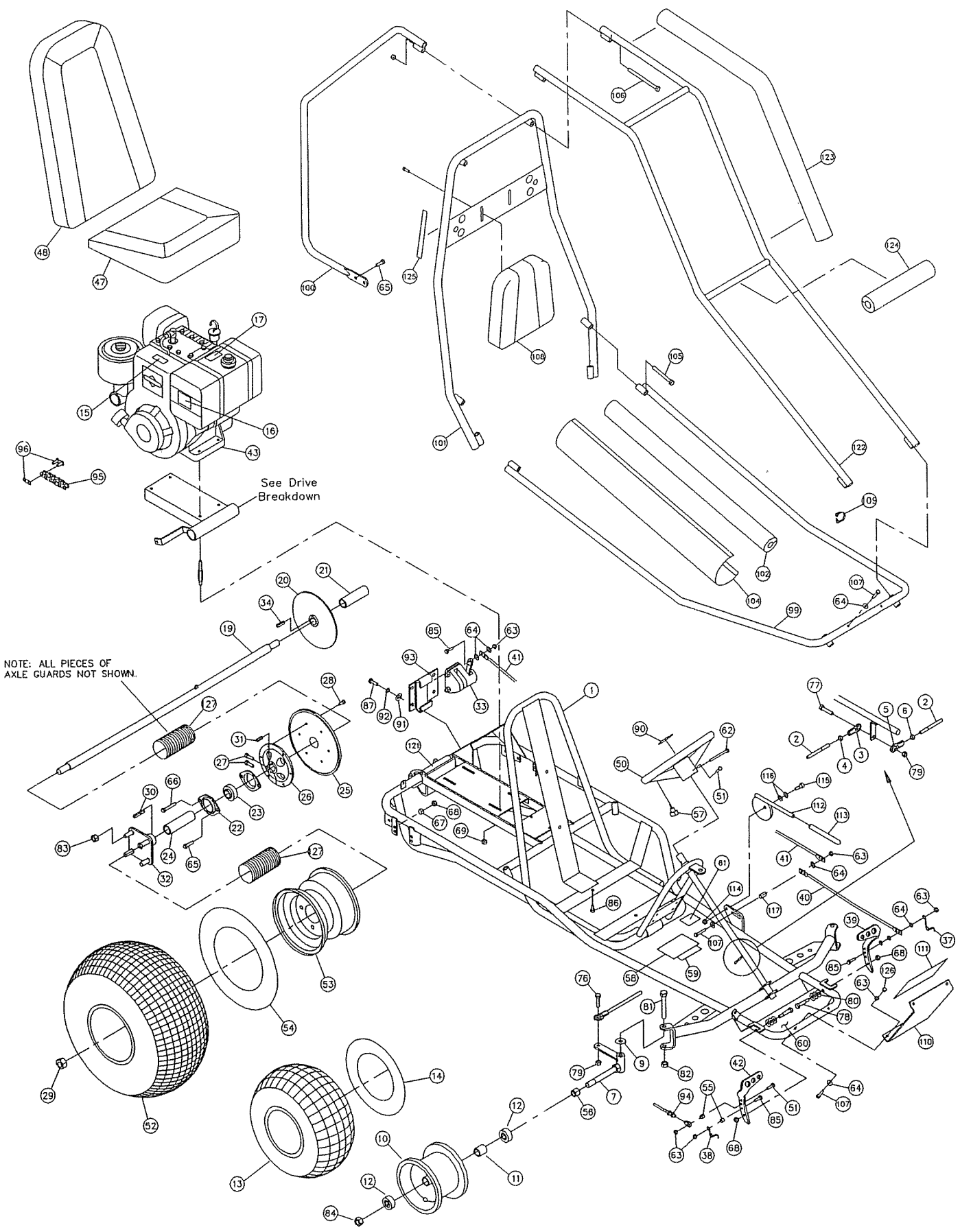


**MANCO**  
**PRODUCTS, INC.**

4404 Engle Ridge Drive Ft. Wayne, Indiana 46804 219-432-1596

**THIS VEHICLE IS FOR  
OFF-ROAD USE ONLY**

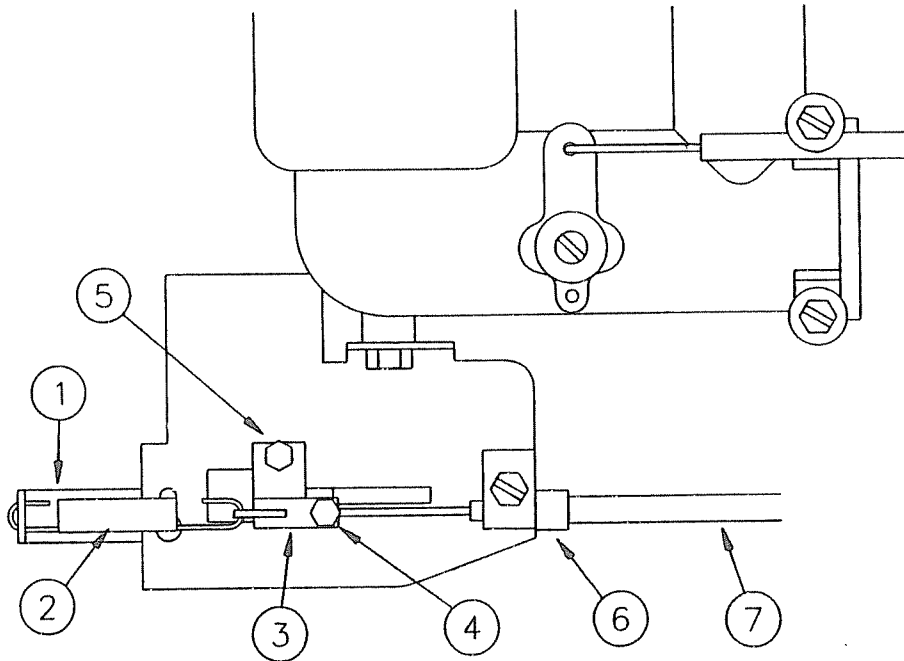
BEFORE OPERATING THIS VEHICLE, THE OWNER AND/OR OPERATOR MUST UNDERSTAND THE VEHICLE WAS NOT DESIGNED OR MANUFACTURED TO MEET SPECIFICATIONS FOR USE ON PUBLIC ROADS, STREETS, HIGHWAYS, OR THOROUGHFARES AND HAVE READ AND HAVE AN UNDERSTANDING OF ALL THE INSTRUCTIONS FOR SAFE ASSEMBLY AND OPERATION AS WELL AS THE INSTRUCTIONS GOVERNING THE ENGINE AND OTHER PORTIONS OF THE VEHICLE.



NOTE: ALL PIECES OF AXLE GUARDS NOT SHOWN.

See Drive Breakdown

8-HP ENGINE MODEL 190432



Throttle Cable Installation: Pass the Throttle Cable through the Throttle Cable Retainer (Ref. 6) and butt the end of the Throttle Cable Housing against the inside shoulder of the Throttle Cable Retainer. Pass the end of the Throttle Cable through the Cable Stop (Ref. 3).

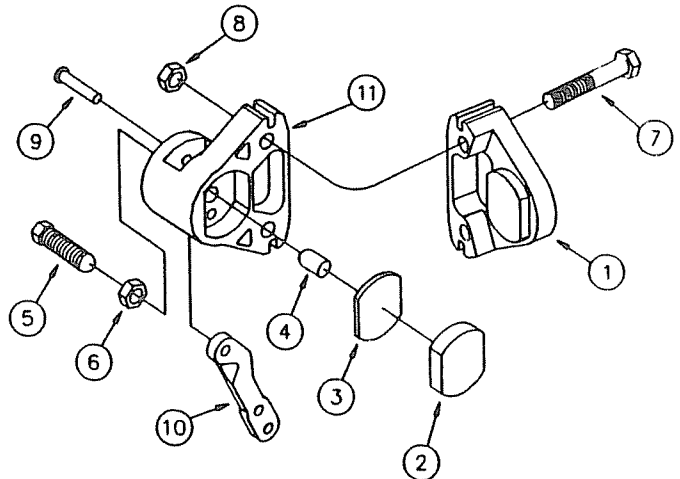
Before tightening the Cable Stop Screw (Ref. 4):

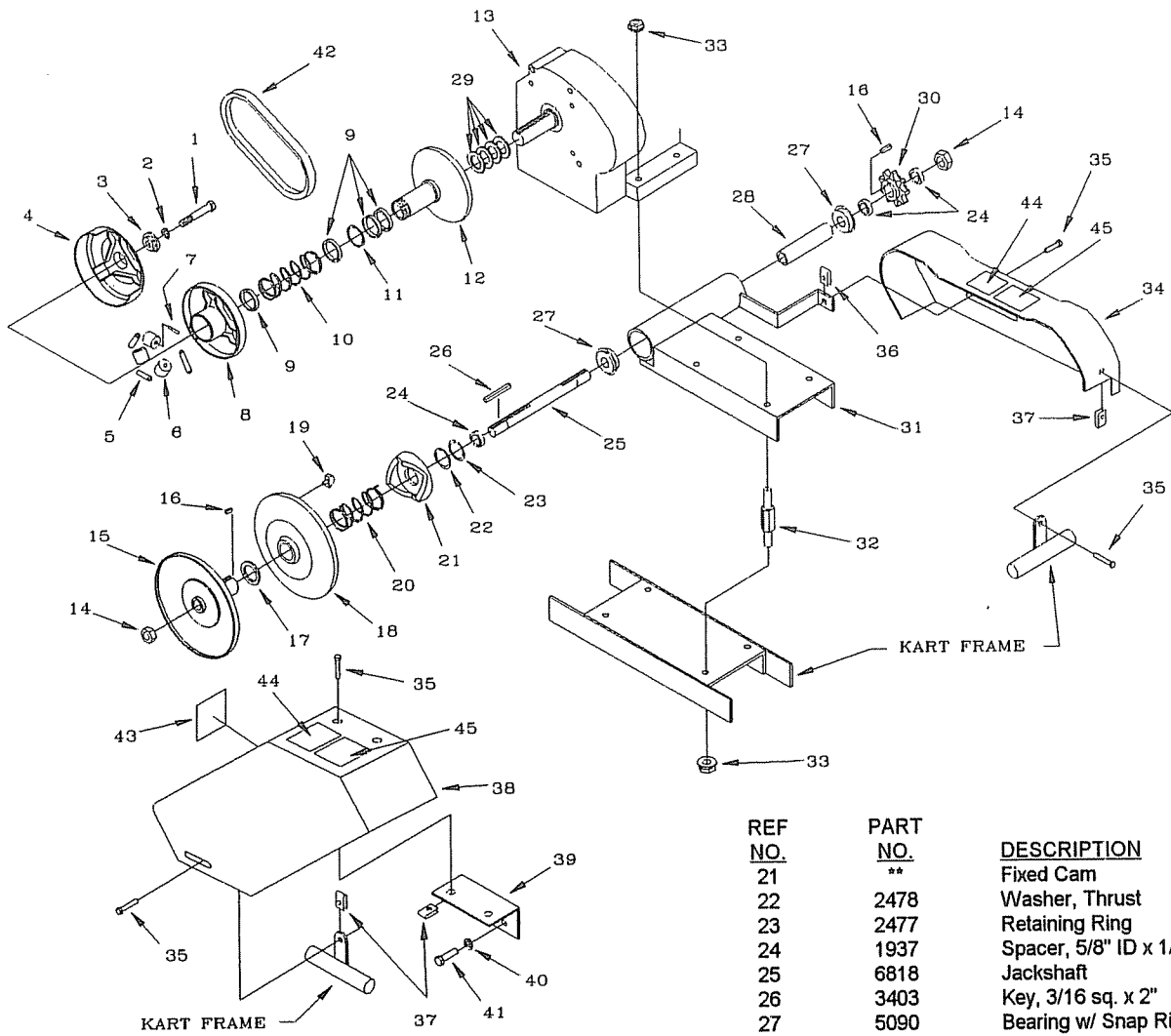
1. Ensure that the Spring Anchor (Ref. 1), Spring (Ref. 2), and Cable Stop (Ref. 3) are installed as illustrated.
2. Ensure that the Throttle Pedal is in the rearward (idle) position.
3. Ensure that there is no slack in the Throttle Cable and that the Cable Stop (Ref. 3) is positioned to the far left.
4. Ensure that the Throttle Cable Housing (Ref. 7) is inside the Throttle Cable Retainer (Ref. 6).

REF. NO.	PART NO.	DESCRIPTION	REF. NO.	PART NO.	DESCRIPTION
1	5926	Spring Anchor	5	5931	Hold Down Screw
2	5927	Throttle Return Spring	6	1628	Throttle Cable Retainer
3	5928	Cable Stop	7	1496	Throttle Cable
4	5929	Cable Stop Screw			

CALIPER BREAKDOWN

REF. NO.	PART NO.	DESCRIPTION
ASM	9597	Brake Caliper (incl. 1-11)
ASM	9810	Brake Pad Svc Kit (incl. 1-3)
1	*	Anvil w/Lining
2	*	Brake Lining
3	3928	Backing Plate
4	3930	Actuator Pin
5	3931	Adjuster Pin
6	3932	Nut, Jam
7	9158	Bolt, 3/8-16 x 2-1/4"
8	9085	Nut, 3/8-16 Toplock
ASM	6534	MB-1 Service Kit (incl. 9-11)
9	*	Groove Pin
10	*	Lever
11	*	Brake Housing





REF NO.	PART NO.	DESCRIPTION
1	2810	Bolt, 7/16-20 x1-3/4"
2	2467	Washer, 7/16 Lock
3	2468	Washer, Pilot
ASM	2594	Driver Pulley (incl. 4-12)
4	**	Cover and Drive Plate
5	2472	Spring, Extension
6	2470	Cam Roller
7	2471	Spring Clip
8	**	Moveable Face and Hub
9	2474	Bushing, Guide
10	2475	Spring, Compression
11	**	Retaining Ring, Spiral
12	**	Fixed Face and Post
13	2790	Engine, 8hp
14	1136	Nut, 5/8-18 Centerlock
ASM	2432	Driven Pulley (incl. 15-23)
15	**	Fixed Face and Post
16	1031	Key, 3/16 sq. x 1/2"
17	2483	Spacer
18	**	Moveable Face and Cam
19	2516	Button Insert
20	2480	Spring, Torsion

REF NO.	PART NO.	DESCRIPTION
21	**	Fixed Cam
22	2478	Washer, Thrust
23	2477	Retaining Ring
24	1937	Spacer, 1" ID x 1/4"
25	6818	Jackshaft
26	3403	Key, 3/16 sq. x 2"
27	5090	Bearing w/ Snap Ring
28	6816	Spanner
29	3887	Spacer, 1" ID x 1/16"
30	1125s	Sprocket, 420 P x 9 Teeth
31	9334-2	TAV Chassis
32	6374	Stud
33	1263	Nut, 5/16-18 Whiz Flange
34	6644	Chainguard
35	9006	Bolt, 1/4-20 x 1/2" Whiz Flange
36	6548	Clip Nut, C17453-1420
37	2449	Clip Nut, C7343-1420-4
38	2415	Cover, TAV
39	9326-2	Mounting Bracket
40	1130	Washer, 3/8 Split Lock
41	4070	Bolt, 3/8-16 x 3/4"
42	6814	Belt
43	6958	Decal, Tire Pressure
44	4912	Decal, Warning
45	1049	Decal, Caution
NI	9677	Decal, Hot Surfaces
NI	9678	Decal, Engine Exhaust
NI	5964	Decal, Oil Warning

ASM = Assembly  
 NI = Not Illustrated  
 \*\* = Not Available Separately

## REPAIR PARTS - MODEL 388-15

REF. NO.	PART NO.	DESCRIPTION	REF. NO.	PART NO.	DESCRIPTION
	9640-2	Frame Weldment	66	6573	5/16-18 x 1-3/4 Hex Hd Cap Screw
ASM	6430	Tie Rod Assembly (incl. 2-6)	67	9674	Spacer 3/8"ID x 3/8
2	6431	Tie Rod	68	1189	5/16-18 Toplock Hex Nut
3	1414	Rod End, RH Thread	69	1263	5/16-18 Hex Flanged Whiz Nut
4	9092	3/8-24 Hex Jam Nut	70	-----	-----
5	1415	Rod End, LH Thread	71	-----	-----
6	9024	3/8-24 LH Hex Jam Nut	72	-----	-----
7	2457	Spindle, RH	73	-----	-----
NI	2458	Spindle, LH	74	-----	-----
9	9022	1/2" Flat Washer	75	-----	-----
10	9309FP	Wheel Assembly, Front	76	9146	3/8-16 x 1-1/2 Hex Hd Cap Screw
11	5950	Spanner, 5/8ID x 2-1/8	77	9145	3/8-16 x 1-3/4 Hex Hd Cap Screw
12	5090	Bearing, 5/8ID	78	1447	Pedal Bolt
13	4915	Tire, 145/70 x 6 Knobby	79	9085	3/8-16 Toplock Hex Nut
14	3802	Inner Tube, 6"	80	9091	3/8" Flat Washer
15	9677	Decal, Warning: Hot Surfaces	81	1264	1/2-13 x 3-1/2 Hex Hd Cap Screw
16	5964	Decal, Oil Warning	82	1012	1/2-13 Toplock Hex Nut
17	9678	Decal, Warning: Engine Exhaust	83	1428	1/2-13 Cone Wheel Nut
18	-----	-----	84	1046	5/8-11 Toplock Hex Nut
19	9694	Axle Shaft	85	1847	1/4-20 x 1 Hex Hd Cap Screw
20	6314	Brake Rotor	86	5839	1/4-20 x 3/4 Flanged Whiz Screw
21	6783	Spacer, 1" ID x 4-1/8	87	2264	5/16-18 x 3/4 Hex Hd Cap Screw
22	6617	Bearing Flange	88	-----	-----
23	3941	Bearing, 1" ID	89	-----	-----
24	4660	Spacer, 1" ID x 4-7/16	90	1689	Steering Wheel Decal
ASM	6420	Sprocket Assembly (incl. 25-28)	91	9060	5/16 Flat Washer
25	6282	Sprocket, 420 x 54 Teeth	92	1124	5/16 Split Lock Washer
26	6280	Sprocket Hub	93	6490-2	Caliper Mounting Bracket
27	6701	5/16-18 x 1" Soc. Hd Cap Screw	94	1496	Throttle Cable
28	1876	1/4-20 x 5/8 Hex Flanged Whiz	95	9343	Chain, 420 x 72 Links (incl. 96)
29	9162	3/4-10 Toplock Hex Nut	96	2037	420 Masterlink
30	6123	Key, 1/4 sq. x 1-3/4	97	-----	-----
31	9680	Key, 1/4 x 3/8 x 1-1/4	98	-----	-----
32	1557	Wheel Hub w/ Studs	99	9524-2	Front Bar Weldment
33	9597	Brake Caliper Assembly	100	9527-2	Rear Bar Weldment
34	1775	Key, 14 sq. x 1-1/4	101	9522-2	Center Bar Weldment
35	-----	-----	102	9759B	Foam, 30" Black
36	-----	-----	103	-----	-----
37	9502	Pedal Spring, Left Wound	104	9856	Custom Cover
38	9503	Pedal Spring, Right Wound	105	2386	3/8-16 x 3-1/2 Hex Hd Cap Screw
39	1436	Brake Pedal	106	6452	3/8-16 x 5 Hex Hd Cap Screw
40	9638-2	Front Brake Rod	107	1849	1/4-20 x 1-1/2 Hex Hd Cap Screw
41	9639-2	Rear Brake Rod	108	6320	Headrest
42	1437	Throttle Pedal	109	9777	Plastic Hose Clamp - 7/8"ID
43	2790	8-HP Engine	110	6395-2	Front Plate
44	-----	-----	111	1688	Decal, Front Plate
45	-----	-----	112	6773-2	Parking Brake Handle
46	-----	-----	113	6442	Brake Handle Cover
47	5160	Seat Bottom	114	6440	5/16-18 Hex Jam Nut
48	5159	Seat Back	115	9172	3/8 x 1/4 Shoulder Bolt
49	-----	-----	116	6441	3/8"ID Spring Washer
50	6038	Steering Wheel	117	9869	Spacer, 5/16"ID x 5/8"
51	9160	1/4-20 x 7/8 Hex Hd Cap Screw	118	-----	-----
ASM	1412	Wheel Assembly, Rear (incl. 52-54)	119	-----	-----
52	1452	Tire, 22 x 11 - 8 Tubeless	120	-----	-----
53	1451	Wheel Rim, 8"	121	2873	Decal, Trailer Load
54	1430	Inner Tube, 8" (Repair part only)	122	9525-2	Overhead Bar Weldment
55	1389	Bushing, 1/4"ID x 5/16	123	9758B	Foam, 43" Black
56	5157	Spacer, 5/8"ID x 3/4	124	9808B	Foam, 10" Black
57	9799	Stop Switch Assembly	125	6540	Decal, Helmet Warning
NI	2435	Extension Wire	126	1443	1/4-20 Hex Acorn Nut
58	4504	Decal, Yellow Warning	127	K389-11	Axle Guard Repair Kit
59	2832	Decal, No Passenger	NI	9247R3	Assembly Instructions
60	1441	Decal, Front Floor Pan	NI	6477	Dingo Operator's Manual
61	8138	Decal, Warning: Entanglement	NI	2644	B&S 8-HP Engine Manual
62	9080	1/4-20 x 2-3/4 Hex Hd Cap Screw			
63	9057	1/4-20 Toplock Hex Nut			
64	1854	#14 Flat Washer			
65	9176	5/16-18 x 1 Hex Hd Cap Screw			

ASM = Assembly  
NI = Not Illustrated