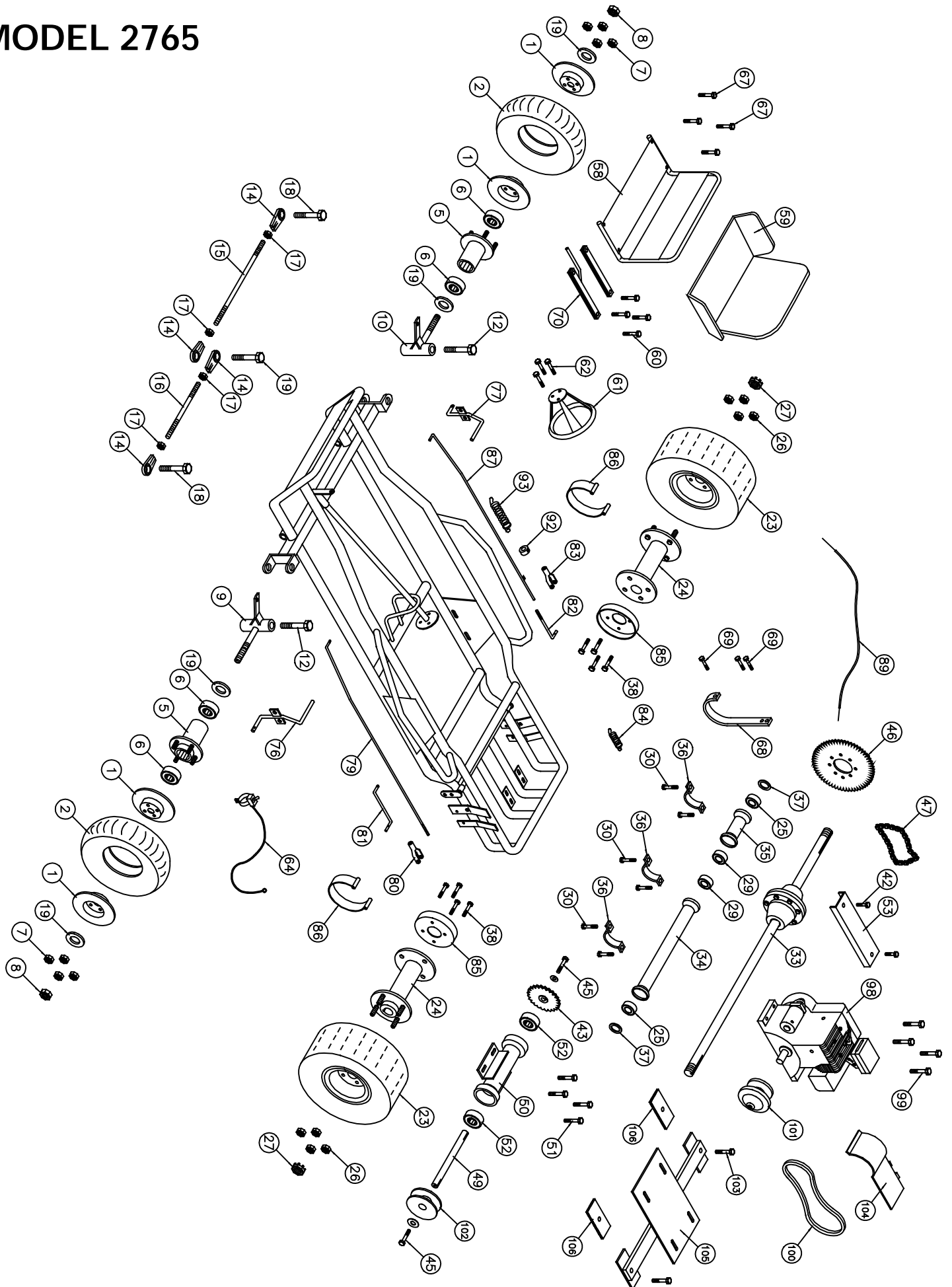


# MODEL 2765



# Super Wheels®

## Go-Kart Parts List - Model 2765

| No.                        | Partno | Description                                    | Qty | No.                                 | Partno | Description                              | Qty |
|----------------------------|--------|--|-----|-------------------------------------|--------|--|-----|
| <b>Front Wheel Section</b> |        |  |     | (54)                                | I114*  | Key 3/16" x 2"                           | 1   |
| (1)                        | G251   | Split rim wheel 6" (Set)                       | 2   | <b>Frame Section</b>                |        |  |     |
| (2)                        | G248   | Tire & tube assembly (15 x 600 x 6)            | 2   | (58)                                | G691   | Metal Seat                               | 1   |
| (3)                        | G249*  | Tire (15 x 600 x 6")                           | 2   | (59)                                | G692   | Cushion Seat                             | 1   |
| (4)                        | G250*  | Tube (15 x 600 x 6")                           | 2   | (60)                                | F904   | Bolt 5/16" x 3/4" w/F.W., L.W. & H.N     | 4   |
| (5)                        | G264   | Steel Flange hub 1 3/8" bore                   | 2   | (61)                                | G672   | Steering Wheel 12"                       | 1   |
| (6)                        | G204   | Bearing (1 3/8" OD x 5/8" ID)                  | 4   | (62)                                | F924   | Bolt 1/4" x 3/4" w/L.W. & H.Nut          | 3   |
| (7)                        | F982   | Bolt 3/8" x 1" w/ L.W. & Hnut                  | 8   | (63)                                | I229*  | Cable Tie                                | 3   |
| (8)                        | F327   | Cotter Nut 5/8"                                | 2   | (64)                                | G774   | Toggle Kill Switch w/ wire (62")         | 1   |
| (9)                        | G287   | Spindle (left)                                 | 1   | (65)                                | G102*  | Flag                                     | 1   |
| (10)                       | G288   | Spindle (right)                                | 1   | (66)                                | G121*  | Flag holder                              | 1   |
| (11)                       | G259*  | Bushings, Bronze 1/2"                          | 4   | (67)                                | F245   | Carriage Bolt 5/16" x 3/4" w/ Cap Nut    | 4   |
| (12)                       | F996   | King Pin Bolt (1/2" x 3 3/4" w/2FW & LN)       | 2   | (68)                                | G775   | Stump Guard                              | 1   |
| (13)                       | I215*  | Grease Fitting 1/4" (Spindles)                 | 2   | (69)                                | F916   | Bolt 5/16" x 3/4" with Lock Nut          | 4   |
| (14)                       | G257   | Tie rod end bearing 3/8" - Heavy Duty          | 4   | (70)                                | G690   | Seat Adjuster Set                        | 1   |
| (15)                       | G209   | Tie rod 3/8" x 18"                             | 1   | (71)                                | G685*  | Seat Belt                                | 1   |
| (16)                       | G239   | Tie Rod 3/8" x 7"                              | 1   | <b>Throttle &amp; Brake Section</b> |        |  |     |
| (17)                       | F309   | Hex nut 3/8" NF                                | 4   | (76)                                | G424   | Brake Pedal                              | 1   |
| (18)                       | F949   | Bolt 3/8" x 1 1/4" (w/F.W. & L.Nut)            | 2   | (77)                                | G425   | Gas Pedal                                | 1   |
| (19)                       | F948   | Bolt 3/8" x 2" w/(3) F.W. & (1) L.Nut          | 1   | (78)                                | F504*  | Cotter pin 1/8" x 1"                     | 6   |
| (20)                       | F504*  | Cotter Pin 1/8" x 1"                           | 2   | (79)                                | G486   | Brake Rod #16                            | 1   |
| <b>Rear Wheel Section</b>  |        |  |     | (80)                                | F510   | Clevis pin 5/16"                         | 1   |
| (23)                       | G331   | Tire (18 x 9.50 x 8") Mounted                  | 2   | (81)                                | G461   | Brake band rod (left)                    | 1   |
| (24)                       | G352   | Drive Hub Cast 1" bore w/ 1/4" keyway          | 2   | (82)                                | G462   | Brake band rod (right)                   | 1   |
| (25)                       | G904   | Bearing M65SRAX64PP                            | 2   | (83)                                | F511   | Clevis pin 3/8"                          | 1   |
| (26)                       | F326   | Lock Nut 1/2"                                  | 8   | (84)                                | I205   | Spring                                   | 1   |
| (27)                       | F312   | Slotted Hex nut 1"                             | 2   | (85)                                | G428   | Brake Drum                               | 2   |
| (28)                       | F507*  | Cotter pin (5/32" x 2")                        | 2   | (86)                                | G449   | Brake Band                               | 2   |
| (29)                       | G338   | Bearing 1" I.D.                                | 2   | (87)                                | G582   | Throttle Rod #11TZ                       | 1   |
| (30)                       | F982   | Bolt 3/8" x 1" w/L.W. & Hnut                   | 6   | (88)                                | F951*  | Bolt 5/16" x 1" w/(1)F.W.,(1)L.W.& H.Nut | 1   |
| (31)                       | I106*  | Key, Axle 1/4" x 3 1/2"                        | 2   | (89)                                | G489   | Throttle wire & conduit (37" Wire)       | 1   |
| (32)                       | F805*  | Bolt 1/2" x 1 1/2" w/ L.W.                     | 8   | (90)                                | G418*  | Conduit Clip                             | 1   |
| (33)                       | G761   | Differential Drive Unit                        | 1   | (91)                                | F935*  | Bolt 3/16" x 3/4" w/L.W. & H.Nut         | 1   |
| (34)                       | G767   | Differential Housing (Long)                    | 1   | (92)                                | F252   | Nyloc Nut                                | 1   |
| (35)                       | G768   | Differential Housing (Short)                   | 1   | (93)                                | I206   | Spring                                   | 1   |
| (36)                       | G769   | Differential Straps                            | 3   | <b>Engine Section</b>               |        |  |     |
| (37)                       | F417   | Flat Washer 1/16" x 1"                         | 2   | (98)                                | E110   | Tecumseh 5.5 HP Engine                   | 1   |
| (38)                       | F954   | Bolt 3/8" x 1 1/4" w/ L.W.                     | 8   | (99)                                | F970   | Bolt 5/16" x 1 3/4" w/ Flange Nut        | 4   |
| <b>Jack Shaft Section</b>  |        |  |     | (100)                               | G776   | Belt S20 884-95DF 203583C                | 1   |
| (42)                       | F924   | Bolt 1/4" x 3/4" w/ L.W. & Hnut                | 2   | (101)                               | G757   | Series 20 Driver unit                    | 1   |
| (43)                       | G501   | Sprocket 12T(40B) (3/4" bore)                  | 1   | (102)                               | G758   | Series 20 Driven unit                    | 1   |
| (44)                       | I101*  | Key 3/16" x 3/4"                               | 1   | (103)                               | F804   | Bolt 1/2" x 2 1/2" w/ F.W. & L.N.        | 2   |
| (45)                       | F967   | Bolt 5/16" x 1" w/F.W. & L.W.                  | 2   | (104)                               | G737   | Belt Guard                               | 1   |
| (46)                       | G575   | Sprocket 54T(40A)                              | 1   | (105)                               | G764   | Engine Mount                             | 1   |
| (47)                       | G576   | Drive chain #40-68 Pitches                     | 1   | (106)                               | G765   | Engine Mount Pads (3 x 3 1/2" Rubber)    | 2   |
| (48)                       | G514*  | Connector link #40                             | 1   | (107)                               | A163*  | Engine Studs w/ Hex Nuts                 | 2   |
| (49)                       | G577   | Jack Shaft (3/4" Dia. w/ 3/16" key)            | 1   | (108)                               | F961*  | Bolt 5/16" x 1 1/4" NF w/ F.W. & L.W.    | 1   |
| (50)                       | G578   | Jack Shaft Housing (1 1/4" Dia. w/ 1 5/8" cup) | 1   | (109)                               | G778*  | Guard Bracket                            | 1   |
| (51)                       | F807   | Bolt 3/8" x 1" w/(2) F.W. & (1) L.Nuts         | 4   | (110)                               | G762*  | Muffler Guard                            | 1   |
| (52)                       | G903   | Bearing (1 5/8" OD x 3/4" ID)                  | 2   |                                     |        |  |     |
| (53)                       | G770   | Chain Guard                                    | 1   |                                     |        |  |     |

\* Not Shown on Drawing

Carter Brothers Mfg. Co., Inc. Route 1, Box 42 Brundidge, AL 36010-9148

Tele: (334) 735-2301 Fax: (334) 735-3500