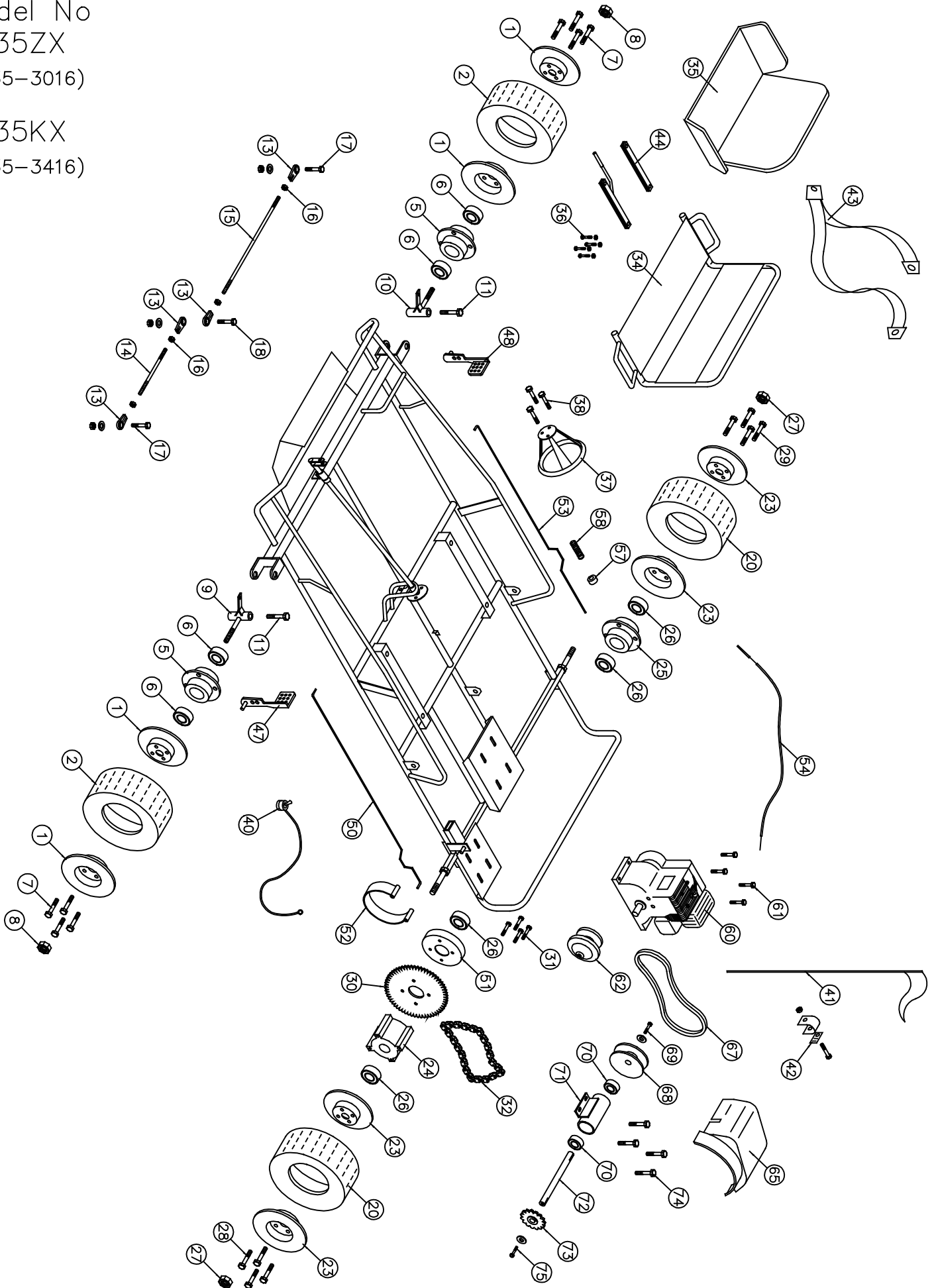


Model No  
2535ZX  
(2535-3016)

2535KX  
(2535-3416)



## Go-Kart Item No 2535-3015, 2535-3415

No	Part No	Description	Qty	No	Part No	Description	Qty
<b>Front Wheel Section</b>				(37)	G647	Steering Wheel 10" (Deep Dish)	1
(1)	G251	Split rim wheel 6" (Set)	2	(38)	F924	Bolt 1/4" x 3/4" w/L.W. & Hex Nut	3
(2)	G276	Tire & Tube Assembly (14.5 x 7.00 x 6")	2	(39)	I229*	Cable tie	1
(3)	G277*	Tire (14.5 x 7.00 x 6")	2	(40)	G642	Toggle Kill Switch w/ wire (48")	1
(4)	G278*	Tube (14.5 x 7.00 x 6")	2	(41)	G155	Flag	1
(5)	G216	Flange hub 1 3/8" Bore	2	(42)	G121	Flag holder	1
(6)	G204	Bearing (1 3/8" OD x 5/8" ID)	4	(43)	G695	Seat Belt 3-Point	2
(7)	F962	Bolt 3/8" x 3/4" (w/Lock Washer)	8	(44)	G690	Seat Adjuster	1
(8)	F328	Lock nut 5/8"	2	<b>Throttle &amp; Brake Section</b>			
(9)	G227	Spindle (left)	1	(47)	G424	Brake pedal	1
(10)	G228	Spindle (right)	1	(48)	G425	Gas pedal	1
(11)	F996	King pin bolt (1/2" x 3 3/4" w/(2)FW & LN)	2	(49)	F504*	Cotter Pin (1/8" x 1")	4
(12)	I215*	Grease fitting 1/4" (Spindles)	2	(50)	G494	Brake rod #24B (CBC)	1
(13)	G207	Tie rod bearing 3/8"	4	(51)	G428	Brake drum	1
(14)	G232	Tie rod (3/8" x 6")	1	(52)	G449	Brake band	1
(15)	G233	Tie rod (3/8" x 16 1/2")	1	(53)	G582	Throttle rod #11T-Z	1
(16)	F309	Hex Nut 3/8" NF	4	(54)	G488	Throttle wire & conduit (31" Cable)	1
(17)	F949	Bolt 3/8" x 1 1/4" w/F.W. & Lock Nut	2	(55)	G418*	Conduit Clip	1
(18)	F948	Bolt 3/8" x 2" w/(3)F.W. & (1) Lock Nut	1	(56)	F935*	Bolt 3/16" x 3/4" w/L washer & nut	1
<b>Rear Wheel Section</b>				(57)	F252	Nyloc Nut	1
(20)	G276	Tire & Tube Assembly (14.5 x 7.00 x 6")	2	(58)	I206	Spring	1
(21)	G277*	Tire (14.5 x 7.00 x 6")	2	<b>Engine/Jack Shaft Section</b>			
(22)	G278*	Tube (14.5 x 7.00 x 6")	2	(60)	3130110	Tecumseh 5hp Engine	1
(23)	G251	Split rim wheel 6" (Set)	2	(61)	F970	Bolt 5/16" x 1 3/4" w/Flange Nut	4
(24)	G222	Drive hub 1 3/8" bore	1	(62)	G704	Centrifugal Belt Clutch	1
(25)	G216	Flange hub 1 3/8" bore	1	(63)	F942*	Bolt 5/16" x 3/4" NF w/ F.W. & L.W.	1
(26)	G204	Bearing (1 3/8" OD x 5/8" ID)	4	(64)	I104*	Key 3/16" x 1 1/2"	1
(27)	F328	Lock nut 5/8"	2	(65)	3371106	Chain and Belt Guard	1
(28)	F947	Bolt 3/8" x 1" w/Lock washer	4	(66)	F924*	Bolt 1/4" x 3/4" w/ L.W. & H.N.	2
(29)	F962	Bolt 3/8" x 3/4" w/Lock washer	4	(67)	G755	V-Belt (5L 300)	1
(30)	G572	Sprocket 60T (41A)	1	(68)	G566	Pulley (B) 5 3/4" w/ 3/4" Bore	1
(31)	F954	Bolt 3/8" x 1 1/4" w/ L.W.	4	(69)	F967	Bolt 5/16" x 1" w/ L.W. & F.W.	1
(32)	G542	Drive chain #40-66 Pitches	1	(70)	G903	Bearing (1 5/8" OD x 3/4" ID)	2
(33)	G514*	Connector link #40	1	(71)	G574	Jack Shaft Housing (1 5/8" x 5")	1
<b>Frame Section</b>				(72)	G557	Jack Shaft (3/4" x 6 7/8")	1
(34)	G700	Metal Seat D/S	1	(73)	G501	Sprocket 12T (40B) w/ 3/4" Bore	1
(35)	G655	Seat Cushion #3 (Hot Bodies)	1	(74)	F944	Bolt 3/8" x 1" w/ Flange Nut	4
(36)	F958	Bolt 5/16" x 1 1/2" w/ F.W., L.W. & H.Nut	2	(75)	F967	Bolt 5/16" x 1" w/ F.W. & L.W.	1

\* Not Shown on Drawing