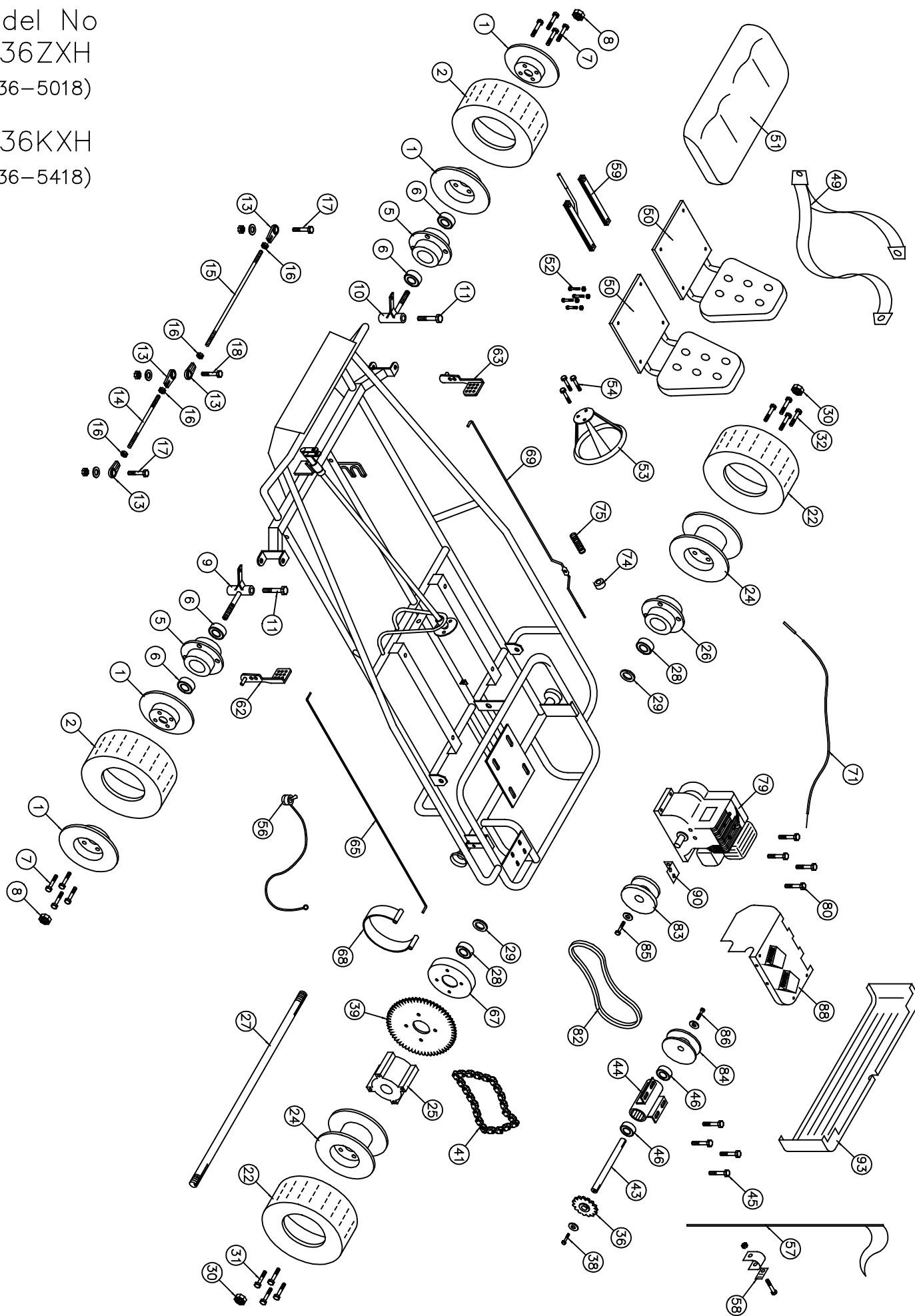


Model No  
2336ZXH  
(2336-5018)

2336KXH  
(2336-5418)



# Go-Kart Item No 2336-3018, 2336-3418

No	Partno	Description	Qty	No	Partno	Description	Qty
<b>Front Wheel Section</b>				<b>Frame Section</b>			
(1)	G251	Split rim wheel 6" (Set)	2	(49)	G695	Seat Belt 3-Point	2
(2)	3181102	Tire & Tube Assembly (15 x 500 x 6") SHog	2	(50)	G696	Seat w/ Molded Back	2
(3)	3161107*	Tire (15 x 500 x 6") SHog	2	(51)	G698	Molded Seat Bottom D/S	1
(4)	G246*	Tube (13 x 500 x 6")	2	(52)	F810	Carriage Bolt 5/16" x 3/4" NC w/ LN	4
(5)	G216	Flange hub 1 3/8" bore	2	(53)	G647	Steering Wheel 10" (Deep Dish)	1
(6)	G204	Bearing (1 3/8" OD x 5/8" ID)	4	(54)	F924	Bolt 1/4" x 3/4" w/L.W. & H.Nut	3
(7)	F962	Bolt 3/8" x 3/4" w/Lock washer	8	(55)	I229*	Cable tie	1
(8)	F328	Lock nut 5/8"	2	(56)	3091132	Toggle Kill Switch w/ wire (48")	1
(9)	3211515	Spindle (left)	1	(57)	G155	Flag	1
(10)	3211514	Spindle (right)	1	(58)	G121	Flag holder	1
(11)	F996	King pin bolt (1/2" x 3 3/4" w/(2)FW & LN)	2	(59)	G690	Seat Adjuster	1
(12)	I230*	Grease fitting 1/4" (Spindles)	2				
(13)	G207	Tie rod bearing 3/8"	4	<b>Throttle &amp; Brake Section</b>			
(14)	G286	Tie rod 3/8" x 7 1/2"	1	(62)	3291506	Brake pedal	1
(15)	G209	Tie rod 3/8" x 18"	1	(63)	3291505	Gas pedal	1
(16)	F309	Nut 3/8" NF	4	(64)	F504*	Cotter Pin 1/8" x 1"	4
(17)	F949	Bolt 3/8" x 1 1/4" w/F.W. & L.Nut	2	(65)	G457	Brake rod	1
(18)	F948	Bolt 3/8" x 2" w/(3)F.W. & (1)L.Nut	1	(66)	F953*	Bolt 3/8" x 2 1/2" w/ 1LW & 2 HN	1
<b>Rear Wheel Section</b>				(67)	G428	Brake drum	1
(22)	3161115	Tire (16x650x8") SHog	2	(68)	G449	Brake band	1
(23)	3161108*	Tire & Rim (16x650x8")	2	(69)	G582	Throttle rod	1
(24)	G293	Rim 8" BW Silver	2	(71)	G489	Throttle Wire & conduit	1
(25)	G308	Drive hub 3/4" bore	1	(72)	G418*	Conduit clip	1
(26)	G310	Flange hub 3/4" bore	1	(73)	F935*	Bolt 3/16" x 3/4" w/L.W. & H.Nut	1
(27)	G314	Axle 3/4" x 38 1/4"	1	(74)	F252	Nyloc Nut	1
(28)	G903	Bearing (1 5/8" OD x 3/4" ID)	2	(75)	I206	Spring	1
(29)	G237	Wear Ring 3/4"	2	<b>Engine Section</b>			
(30)	F330	Lock nut 3/4"	2	(79)	3130138	Tecumseh 6 hp Engine w/ Alt	1
(31)	F947	Bolt 3/8" x 1" w/Lock washer	4	(80)	F970	Bolt 5/16" x 1 3/4" w/Flange Nut	4
(32)	F962	Bolt 3/8" x 3/4" w/Lock washer	4	(81)	G756*	Series 20 Torque Converter Complete	1
(33)	I112*	Key 3/16" x 2 3/4"	2	(82)	G776	Belt S20 884-95DF	1
<b>Jack Shaft Section</b>				(83)	G757	Series 20 Driver unit	1
(36)	G501	Sprocket 12T (40B)	1	(84)	G758	Series 20 Driven unit	1
(37)	I113*	Key 3/16" x 7/8"	1	(85)	F961	Bolt 5/16" x 1 1/4" (Fine) w/L.W. & F.W.	1
(38)	F967	Bolt 5/16" x 1" w/F.W. & L.W.	1	(86)	F967	Bolt 5/16" x 1" w/F.W. & L.W.	1
(39)	G572	Sprocket 60T (41A)	1	(87)	I114*	Key 3/16" x 2" <b>(N.S.)</b>	1
(40)	F954*	Bolt 3/8" x 1 1/4" w/Lock washer	4	(88)	3371136	Drive Cover	1
(41)	G576	Drive Chain #40-68 Pitches	1	(89)	F111*	Bolt 5/16" x 3/4"	2
(42)	G514*	Connector Link #40	1	(90)	G778	Guard Bracket	1
(43)	G529	Jack shaft (1 5/8" x 12 5/16")	1	(91)	F902	Bolt 1/4" x 1/2" w/ L.W.	1
(44)	G532	Jack Shaft Housing (1 5/8" x 9 1/8")	1	(92)	3099000*	Light Kit	1
(45)	F951	Bolt 5/16" x 1" w/FW & Flange Nut	4	(93)	3371133	Bumper Guard	1
(46)	G903	Bearing (1 5/8" OD x 3/4" ID)	2				

\* Not Shown on Drawing