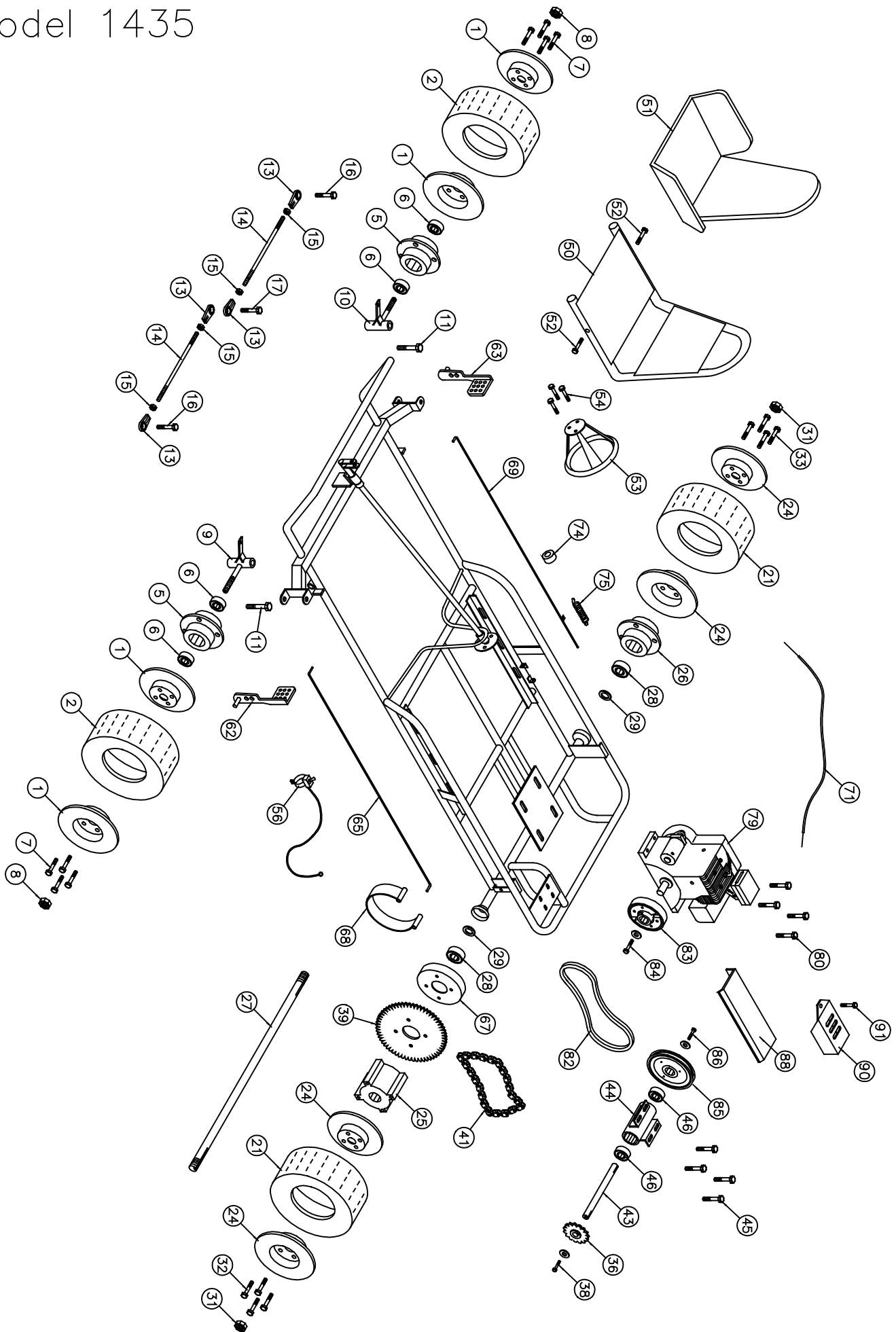


Model 1435



Hot Bodies®

Go-Kart Parts List - Model 1435

| No | Partno | Description | Qty | No | Partno | Description | Qty |
|----------------------------|--------|--|-----|-------------------------------------|--------|---|-----|
| Front Wheel Section | | | | (46) | G903 | Bearing (1 5/8" OD x 3/4" ID) | 2 |
| (1) | G251 | Split rim wheel 6" (Set) | 2 | Frame Section | | | |
| (2) | G276 | Tire & Tube Assembly (14.5 x 7.00 x 6") | 2 | (49) | G689* | Seat Belt | 1 |
| (3) | G277* | Tire (14.5 x 7.00 x 6") | 2 | (50) | G686 | Metal Seat | 1 |
| (4) | G278* | Tube (14.5 x 7.00 x 6") | 2 | (51) | G656 | Cushion seat #4 | 1 |
| (5) | G216 | Flange hub 1 3/8" bore | 2 | (52) | F958 | Bolt 5/16" x 1 1/2" w/ F.W., L.W. & H.Nut | 2 |
| (6) | G204 | Bearing (1 3/8" OD x 5/8" ID) | 4 | (53) | G647 | Steering Wheel 10" (Deep Dish) | 1 |
| (7) | F962 | Bolt 3/8" x 3/4" w/Lock washer | 8 | (54) | F924 | Bolt 1/4" x 3/4" w/L.W. & H.Nut | 3 |
| (8) | F328 | Lock nut 5/8" | 2 | (55) | I229* | Cable tie | 1 |
| (9) | G227 | Spindle (left) | 1 | (56) | G642 | Toggle Kill Switch w/ wire (48") | 1 |
| (10) | G228 | Spindle (right) | 1 | (57) | G101* | Flag | 1 |
| (11) | F996 | King pin bolt (1/2" x 3 3/4" w/(2)FW & LN) | 2 | (58) | G121* | Flag holder | 1 |
| (12) | I215* | Grease fitting 1/4" (Spindles) | 2 | (59) | G690* | Seat Adjuster | 1 |
| (13) | G207 | Tie rod bearing 3/8" | 4 | Throttle & Brake Section | | | |
| (14) | G236 | Tie rod 3/8" x 11 3/8" | 2 | (62) | G433 | Brake pedal | 1 |
| (15) | F309 | Nut 3/8" NF | 4 | (63) | G434 | Gas pedal | 1 |
| (16) | F949 | Bolt 3/8" x 1 1/4" w/F.W. & L.Nut | 2 | (64) | F504* | Cotter Pin 1/8" x 1" | 4 |
| (17) | F948 | Bolt 3/8" x 2" w/(3)F.W. & (1)L.Nut | 1 | (65) | G410 | Brake rod #27B | 1 |
| Rear Wheel Section | | | | (67) | G428 | Brake drum | 1 |
| (21) | G276 | Tire & Tube Assembly (14.5 x 7.00 x 6") | 2 | (68) | G449 | Brake band | 1 |
| (22) | G277* | Tire (14.5 x 7.00 x 6") | 2 | (69) | G582 | Throttle rod #11T-Z | 1 |
| (23) | G278* | Tube (14.5 x 7.00 x 6") | 2 | (71) | G489 | Throttle Wire & conduit (37" Wire) | 1 |
| (24) | G251 | Split rim wheel 6" (Set) | 2 | (72) | G418* | Conduit clip | 1 |
| (25) | G308 | Drive hub 3/4" bore | 1 | (73) | F935* | Bolt 3/16" x 3/4" w/L.W. & H.Nut | 1 |
| (26) | G310 | Flange hub 3/4" bore | 1 | (74) | F252 | Nyloc Nut | 1 |
| (27) | G314 | Axle 3/4" x 38 1/4" | 1 | (75) | I206 | Spring | 1 |
| (28) | G903 | Bearing (1 5/8" OD x 3/4" ID) | 2 | Engine Section | | | |
| (29) | G237 | Wear Ring 3/4" | 2 | (79) | E104 | Briggs & Stratton 5 hp Engine (136212) | 1 |
| (30) | I112* | Key 3/16" x 2 3/4" | 2 | (80) | F970 | Bolt 5/16" x 1 3/4" w/Flange Nut | 4 |
| (31) | F330 | Lock nut 3/4" | 2 | (82) | G755 | V-Belt (5L 300) | 1 |
| (32) | F947 | Bolt 3/8" x 1" w/Lock washer | 4 | (83) | G704 | Centrifugal Belt Clutch | 1 |
| (33) | F962 | Bolt 3/8" x 3/4" w/Lock washer | 4 | (84) | F111 | Bolt 5/16" x 3/4" | 2 |
| Jack Shaft Section | | | | (85) | G566 | Pulley (B) 5 3/4" w/ 3/4" Bore | 1 |
| (36) | G501 | Sprocket 12T (40B) | 1 | (86) | F967 | Bolt 5/16" x 1" w/ L.W.& F.W. | 1 |
| (37) | I113* | Key 3/16" x 7/8" | 1 | (87) | I104* | Key 3/16" x 1 1/2" | 1 |
| (38) | F967 | Bolt 5/16" x 1" w/F.W. & L.W. | 1 | (88) | G737 | Belt Guard | 1 |
| (39) | G541 | Sprocket 54T (41A) | 1 | (89) | G778* | Belt Guard Bracket | 1 |
| (40) | F954* | Bolt 3/8" x 1 1/4" w/Lock washer | 4 | (90) | G762 | Muffler Guard | 1 |
| (41) | G567 | Drive Chain #40-62 Pitches | 1 | (91) | F902 | Bolt 1/4" x 1/2" w/ L.W. | 1 |
| (42) | G514* | Connector Link #40 | 1 | (92) | F961* | Bolt 5/16" x 1 1/4" w/ FW & LW | 1 |
| (43) | G529 | Jack shaft (3/4" X 12 5/16") | 1 | (93) | G533* | Spacer 1/4" | 1 |
| (44) | G531 | Jack Shaft Housing (1 5/8" x 9 1/8") | 1 | (94) | F808* | Screw 3/16" x 1/2" w/10-24 Speed Nut | 2 |
| (45) | F951 | Bolt 5/16" x 1" | 4 | | | | |

* Not Shown on Drawing