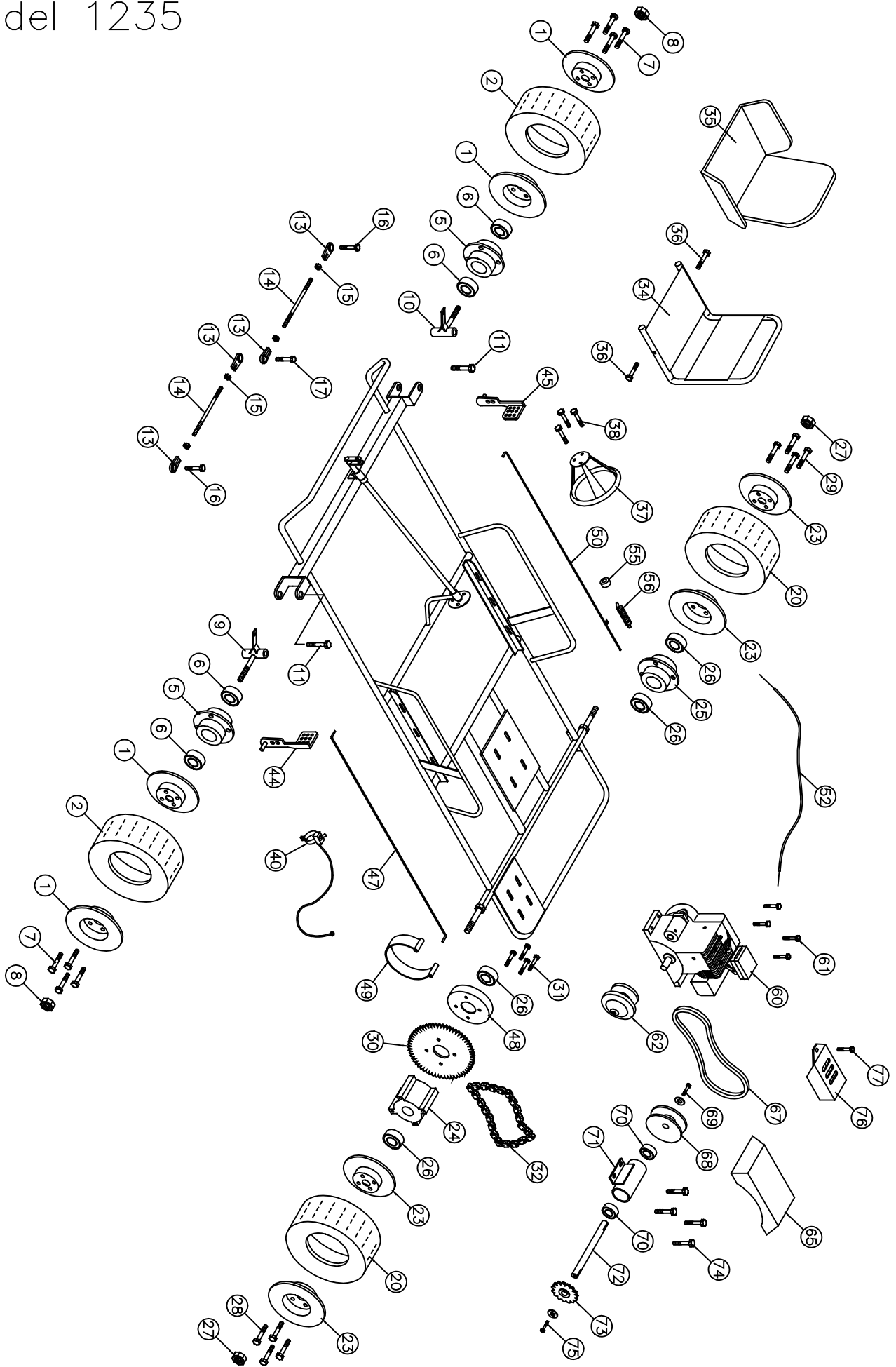


Model 1235



Hot Bodies

Go-Kart Parts List - Model 1235

| No | Part No | Description | Qty | No | Part No | Description | Qty |
|----------------------------|---------|--|-----|-------------------------------------|---------|--|-----|
| Front Wheel Section | | | | (38) | F924 | Bolt 1/4" x 3/4" w/L.W. & Hex Nut | 3 |
| (1) | G251 | Split rim wheel 6" (Set) | 2 | (39) | I229* | Cable tie | 1 |
| (2) | G276 | Tire & Tube Assembly (14.5 x 7.00 x 6") | 2 | (40) | G642 | Toggle Kill Switch w/ wire (48") | 1 |
| (3) | G277* | Tire (14.5 x 7.00 x 6") | 2 | (41) | G101* | Flag | 1 |
| (4) | G278* | Tube (14.5 x 7.00 x 6") | 2 | (42) | G121* | Flag holder | 1 |
| (5) | G216 | Flange hub 1 3/8" Bore | 2 | (43) | G690* | Seat Adjuster | 1 |
| (6) | G204 | Bearing (1 3/8" OD x 5/8" ID) | 4 | Throttle & Brake Section | | | |
| (7) | F962 | Bolt 3/8" x 3/4" (w/Lock Washer) | 8 | (44) | G433 | Brake pedal | 1 |
| (8) | F328 | Lock nut 5/8" | 2 | (45) | G434 | Gas pedal | 1 |
| (9) | G227 | Spindle (left) | 1 | (46) | F504* | Cotter Pin (1/8" x 1") | 4 |
| (10) | G228 | Spindle (right) | 1 | (47) | G468 | Brake rod #5B | 1 |
| (11) | F996 | King pin bolt (1/2" x 3 3/4" w/(2)FW & LN) | 2 | (48) | G428 | Brake drum | 1 |
| (12) | I215* | Grease fitting 1/4" (Spindles) | 2 | (49) | G449 | Brake band | 1 |
| (13) | G207 | Tie rod bearing 3/8" | 4 | (50) | G582 | Throttle rod #11T-Z | 1 |
| (14) | G231 | Tie rod (3/8" x 10 1/4") | 2 | (52) | G488 | Throttle wire & conduit (31" Cable) | 1 |
| (15) | F309 | Hex Nut 3/8" NF | 4 | (53) | G418* | Conduit Clip | 1 |
| (16) | F949 | Bolt 3/8" x 1 1/4" w/F.W. & Lock Nut | 2 | (54) | F935* | Bolt 3/16" x 3/4" w/L washer & nut | 1 |
| (17) | F948 | Bolt 3/8" x 2" w/(3)F.W. & (1) Lock Nut | 1 | (55) | F252 | Nyloc Nut | 1 |
| Rear Wheel Section | | | | (56) | I206 | Spring | 1 |
| (20) | G276 | Tire & Tube Assembly (14.5 x 7.00 x 6") | 2 | Engine/Jack Shaft Section | | | |
| (21) | G277* | Tire (14.5 x 7.00 x 6") | 2 | (60) | E104 | Briggs & Stratton 5 hp Engine (136212) | 1 |
| (22) | G278* | Tube (14.5 x 7.00 x 6") | 2 | (61) | F970 | Bolt 5/16" x 1 3/4" w/Flange Nut | 4 |
| (23) | G251 | Split rim wheel 6" (Set) | 2 | (62) | G704 | Centrifugal Belt Clutch | 1 |
| (24) | G222 | Drive hub 1 3/8" bore | 1 | (63) | F942* | Bolt 5/16" x 3/4" NF w/ F.W. & L.W. | 1 |
| (25) | G216 | Flange hub 1 3/8" bore | 1 | (64) | I104* | Key 3/16" x 1 1/2" | 1 |
| (26) | G204 | Bearing (1 3/8" OD x 5/8" ID) | 4 | (65) | G760 | Chain and Belt Guard | 1 |
| (27) | F328 | Lock nut 5/8" | 2 | (66) | F924* | Bolt 1/4" x 3/4" w/ L.W. & H.N. | 2 |
| (28) | F947 | Bolt 3/8" x 1" w/Lock washer | 4 | (67) | G755 | V-Belt (5L 300) | 1 |
| (29) | F962 | Bolt 3/8" x 3/4" w/Lock washer | 4 | (68) | G566 | Pulley B-5 3/4" w/ 3/4" Bore | 1 |
| (30) | G572 | Sprocket 60T (41A) | 1 | (69) | F967 | Bolt 5/16" x 1" w/ L.W. & F.W. | 1 |
| (31) | F954 | Bolt 3/8" x 1 1/4" w/ L.W. | 4 | (70) | G903 | Bearing (1 5/8" OD x 3/4" ID) | 2 |
| (32) | G542 | Drive chain #40-66 Pitches | 1 | (71) | G574 | Jack Shaft Housing (1 5/8" x 5") | 1 |
| Frame Section | | | | (72) | G557 | Jack Shaft (3/4" x 6 7/8") | 1 |
| (33) | G689* | Seat Belt | 1 | (73) | G501 | Sprocket 12T (40B) w/ 3/4" Bore | 1 |
| (34) | G686 | Metal Seat | 1 | (74) | F944 | Bolt 3/8" x 1" w/ Flange Nut | 4 |
| (35) | G656 | Seat Cushion #4 (Hot Bodies) | 1 | (75) | F967 | Bolt 5/16" x 1" w/ F.W. & L.W. | 1 |
| (36) | F958 | Bolt 5/16" x 1 1/2" w/ F.W., L.W. & H.Nut | 2 | (76) | G762 | Muffler Guard | 1 |
| (37) | G647 | Steering Wheel 10" (Deep Dish) | 1 | (77) | F902 | Bolt 1/4" x 1/2" w/ LW | 1 |
| | | | | (78) | G533* | Spacer 1/4" | 1 |

* Not Shown on Drawing